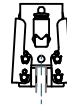
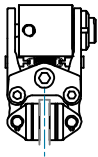


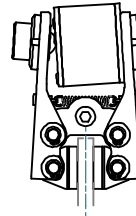
**PPV-N ...**  
Pag. 44



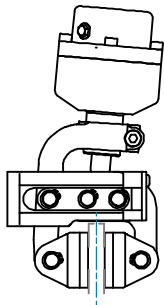
**PPC-N ...**  
Pag. 45



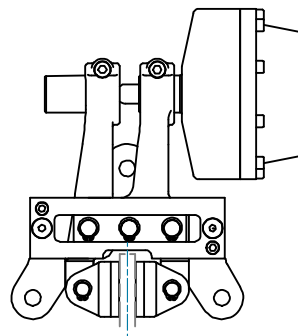
**PPA-N ...**  
Pag. 46



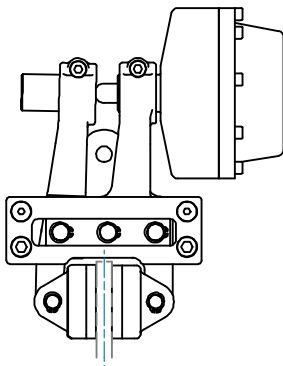
**PPB-N ...**  
Pag. 47-48



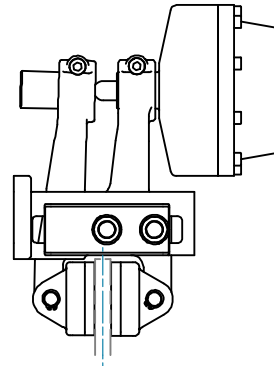
**PPD-N ...**  
Pag. 49-50



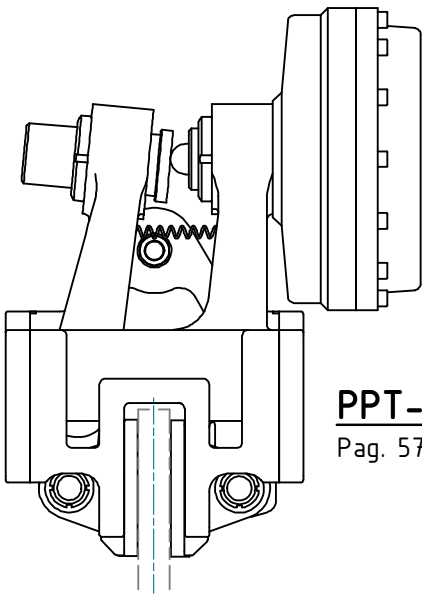
**PPF-N ...**  
Pag. 51-52



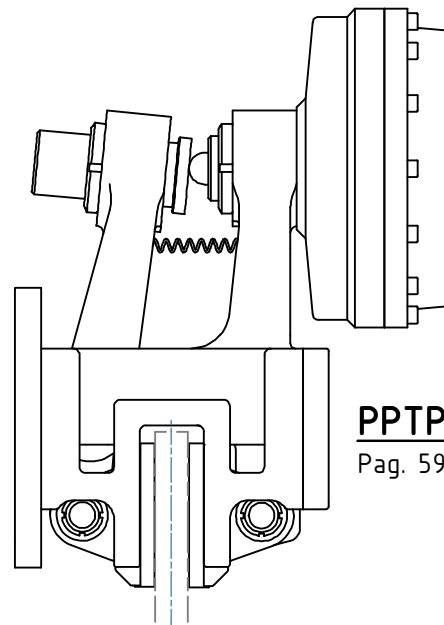
**PPH-N ...**  
Pag. 53-54



**PPHP-N ...**  
Pag. 55-56



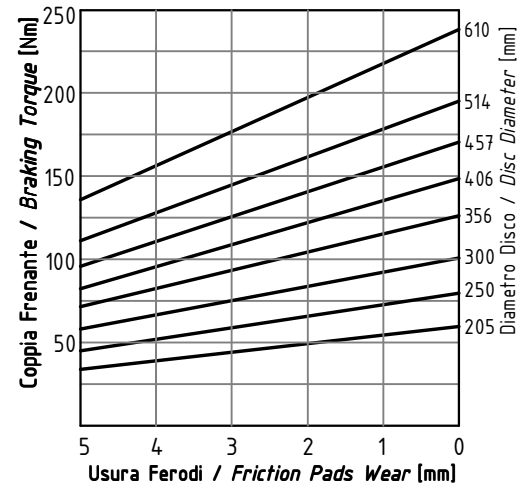
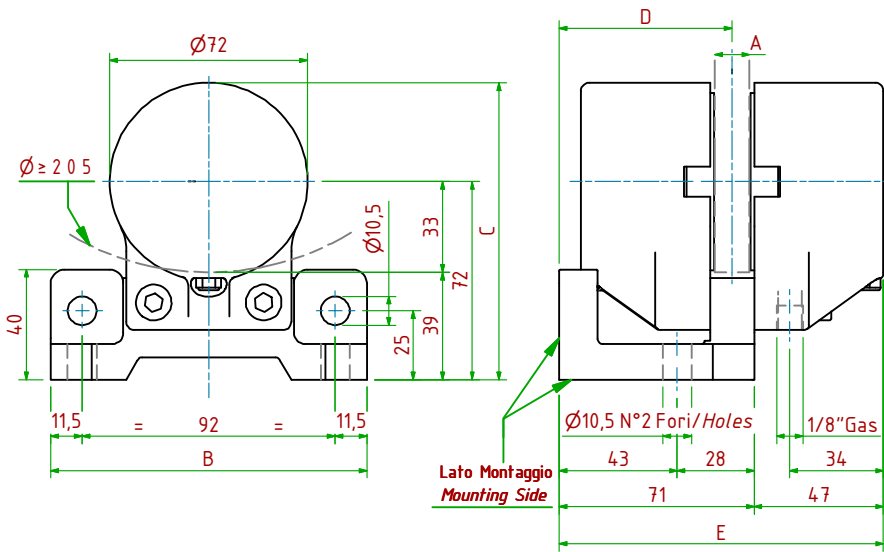
**PPT-N ...**  
Pag. 57-58



**PPTP-N ...**  
Pag. 59-60

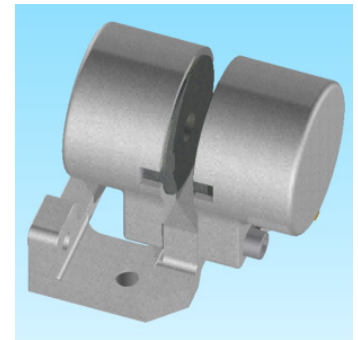
PPV-N065/□□□

Pneumatico Negativo/Pneumatically Released



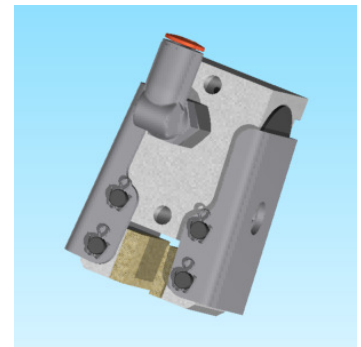
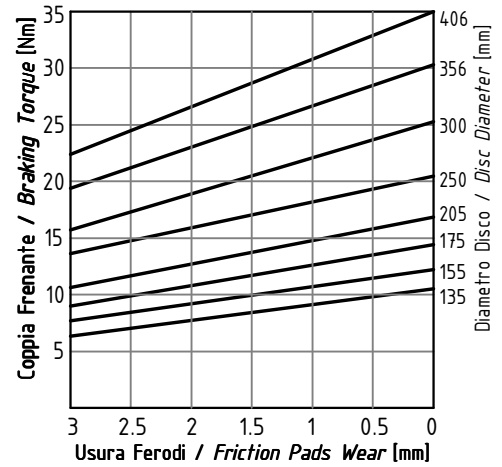
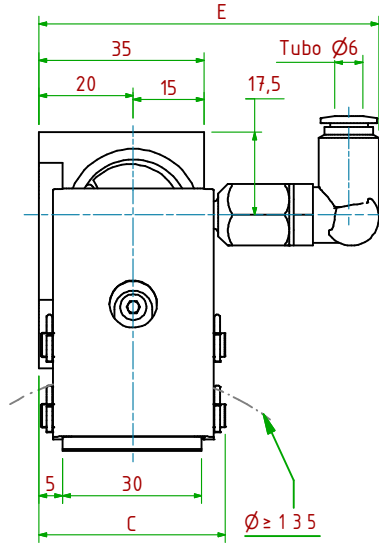
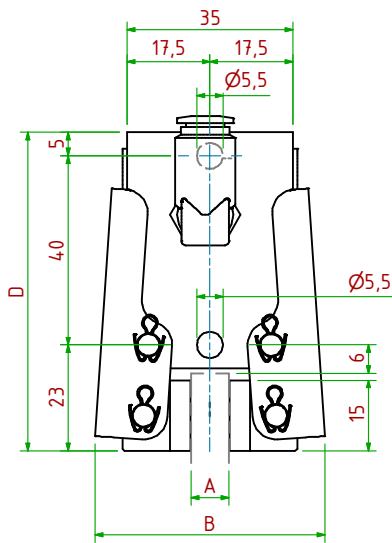
- Pressione di Apertura/Release Pressure: **Pa= 6bar** - Volume Max Cilindro/Max Cylinder Volume: **33 cm<sup>3</sup>**
- Coppia Frenante/Braking Torque: **Md= [Ft x (Φ(m)/2 - 0.033(m))]**  
**Importante:** La Coppia Frenante Iniziale può essere più bassa del 30%-50% **Warning:** Initial Braking Torque can be lower of 30%-50%
- Usura Ferodi Massima Totale/Maximum total wear of pads =10mm

MODELLO/MODEL	CODICE/ CODE	A	B	C	D	E	Forza Frenante/Braking Force	Peso
PPV-N065/ 08	19.36.M065.02	8	115	108	63	118	Ft= 870N (0bar)	1.3 kg
PPV-N065/12.7	19.36.M065.03	12.7	115	108	63	118	Ft= 870N (0bar)	1.3 kg



PPC-N C01/ □ □ □

Pneumatico Negativo/Pneumatically Released

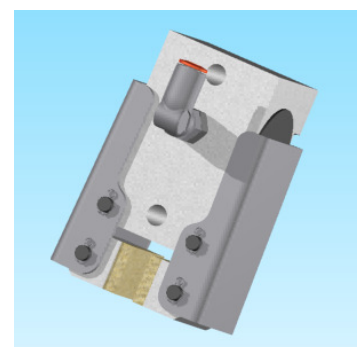
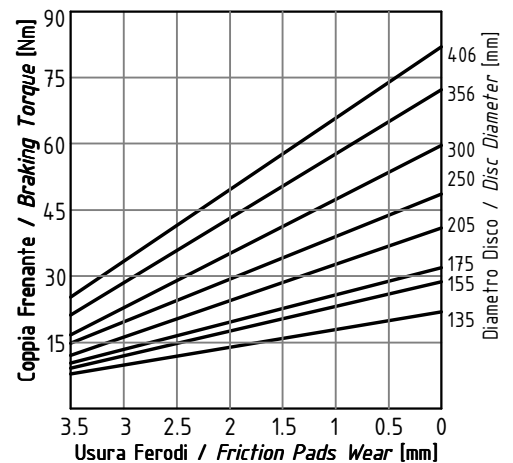
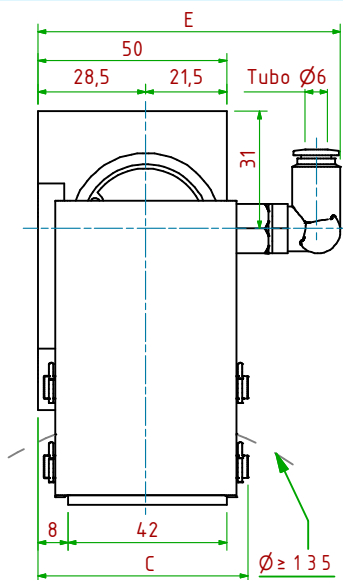
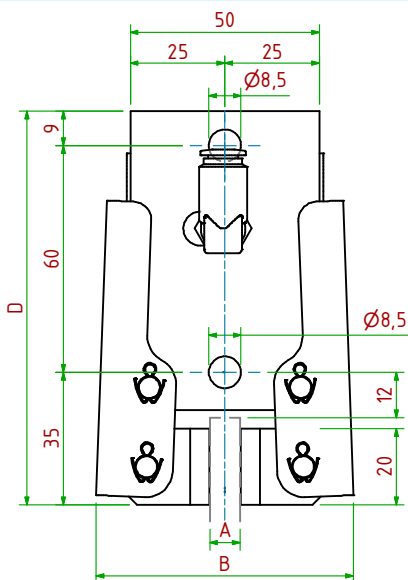


- Pressione di Apertura/Release Pressure: **Pa= 6bar** - Volume Max Cilindro/Max Cylinder Volume: **3cm<sup>3</sup>**
- Coppia Frenante/Braking Torque: **Md= [Ft x (Φ(m)/2 - 0.009(m))]**  
**Importante:** La Coppia Frenante Iniziale può essere più bassa del 30%-50% **Warning:** Initial Braking Torque can be lower of 30%-50%
- Usura Ferodi Massima Totale/Maximum total wear of pads:  
PPC-N C01/08 =8mm PPC-N C01/12.7 =4mm

MODELLO/ MODEL	CODICE/ CODE	A	B	C	D <sub>Max</sub>	E <sub>Max</sub>	Forza Frenante/Braking Force	Peso
PPC-N C01/ 08	19.36.C01.02	8	50	40	68	75	Ft= 180N (0bar)	0.4kg
PPC-N C01/12.7	19.36.C01.03	12.7	50	40	68	75	Ft= 180N (0bar)	0.4kg

PPC-N C02/ □ □ □

Pneumatico Negativo/Pneumatically Released

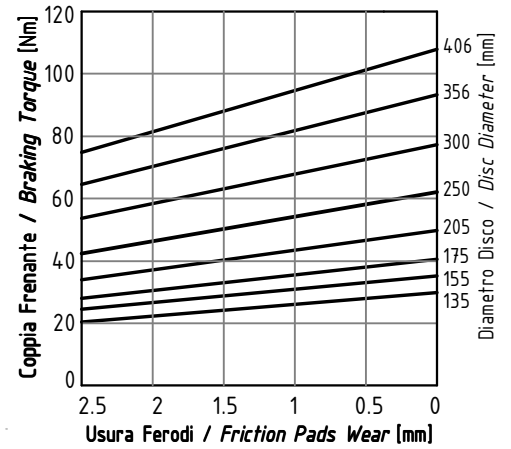
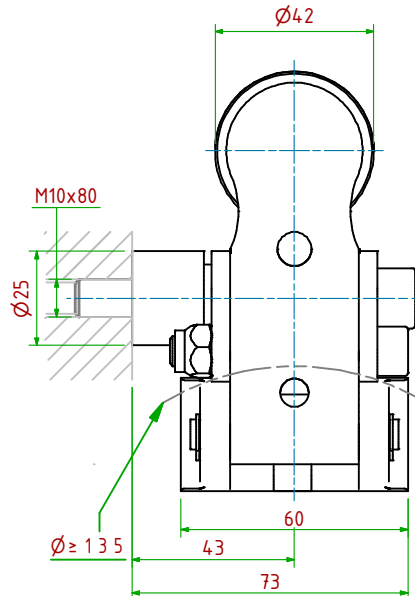
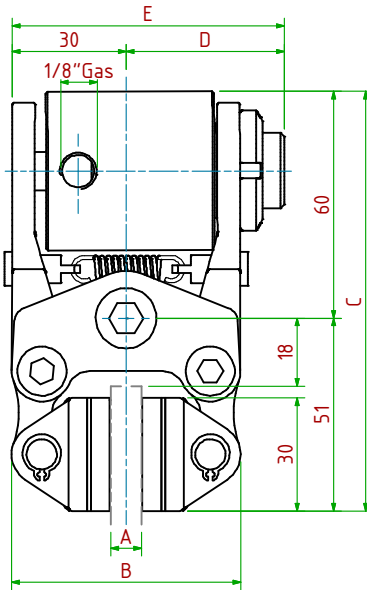


- Pressione di Apertura/Release Pressure: **Pa= 6bar** - Volume Max Cilindro/Max Cylinder Volume: **8cm<sup>3</sup>**
- Coppia Frenante/Braking Torque: **Md= [Ft x (Φ(m)/2 - 0.013(m))]**  
**Importante:** La Coppia Frenante Iniziale può essere più bassa del 30%-50% **Warning:** Initial Braking Torque can be lower of 30%-50%
- Usura Ferodi Massima Totale/Maximum total wear of pads:  
PPC-N C02/08 =8mm PPC-N C02/12.7 =5mm

MODELLO/ MODEL	CODICE/ CODE	A	B	C	D <sub>Max</sub>	E <sub>Max</sub>	Forza Frenante/Braking Force	Peso
PPC-N C02/ 08	19.36.C02.02	8	68	56	104	83	Ft= 430N (0bar)	1.1 kg
PPC-N C02/12.7	19.36.C02.03	12.7	68	56	104	83	Ft= 430N (0bar)	1.1 kg

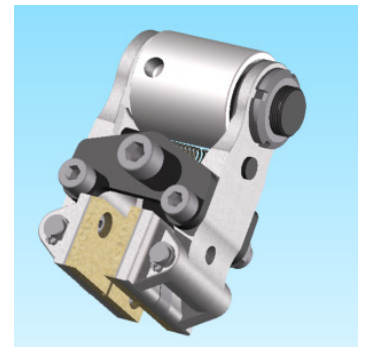
PPA-N A03/ □ □ □

Pneumatico Negativo/Pneumatically Released



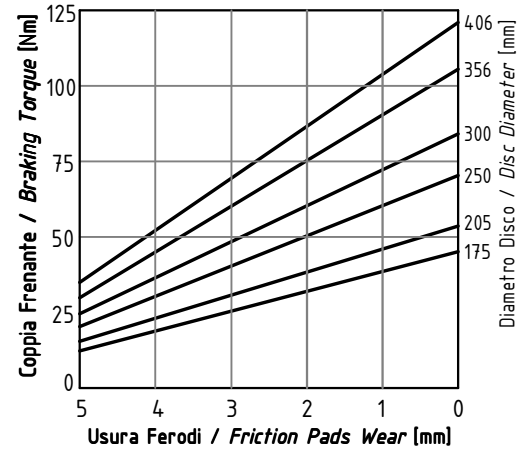
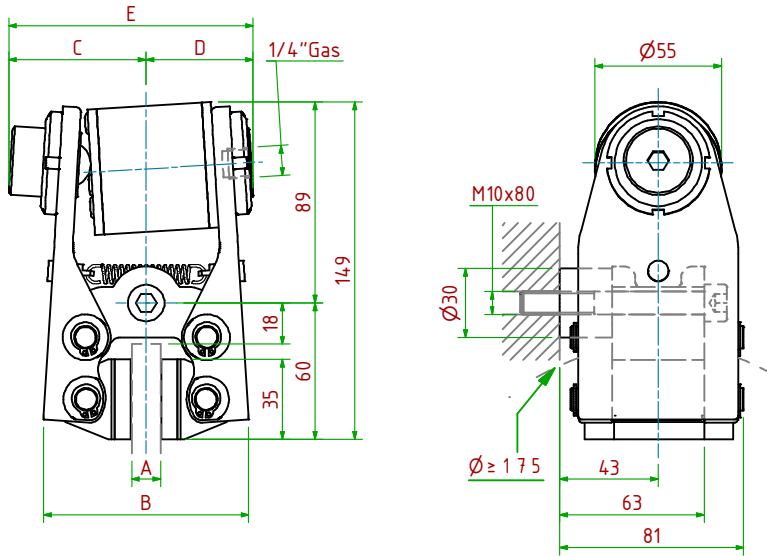
- Pressione di Apertura/Release Pressure: **Pa= 6bar** - Volume Max Cilindro/Max Cylinder Volume: **6 cm<sup>3</sup>**
- Coppia Frenante/Braking Torque: **Md= [Ft x (Φ(m)/2 - 0.018(m))]**
- Importante:** La Coppia Frenante Iniziale può essere più bassa del 30%-50% **Warning:** Initial Braking Torque can be lower of 30%-50%
- Usura massima totale Ferodi/Maximum total wear of pads =5mm

MODELLO/MODEL	CODICE/ CODE	A	B	C	D <sub>Max</sub>	E <sub>Max</sub>	Ft: Forza Frenante	Peso
PPA-N A03/ 08	19.36.A03.02	8	61	111	42	72	Ft= 580N (0bar)	1.1 kg
PPA-N A03/12.7	19.36.A03.03	12.7	65	111	42	72	Ft= 580N (0bar)	1.2 kg



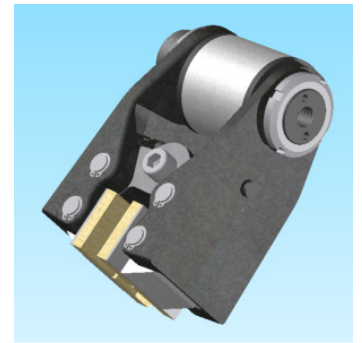
PPB-N001/□□□

Pneumatico Negativo/Pneumatically Released



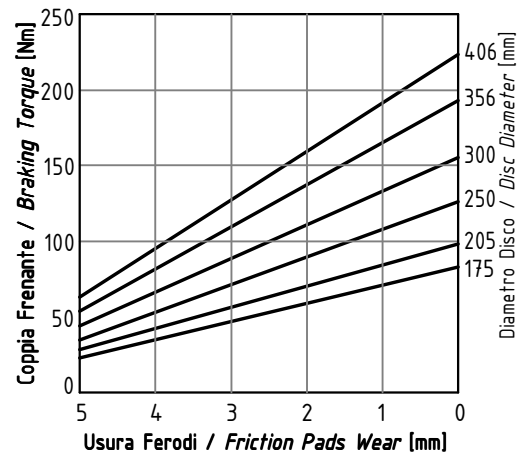
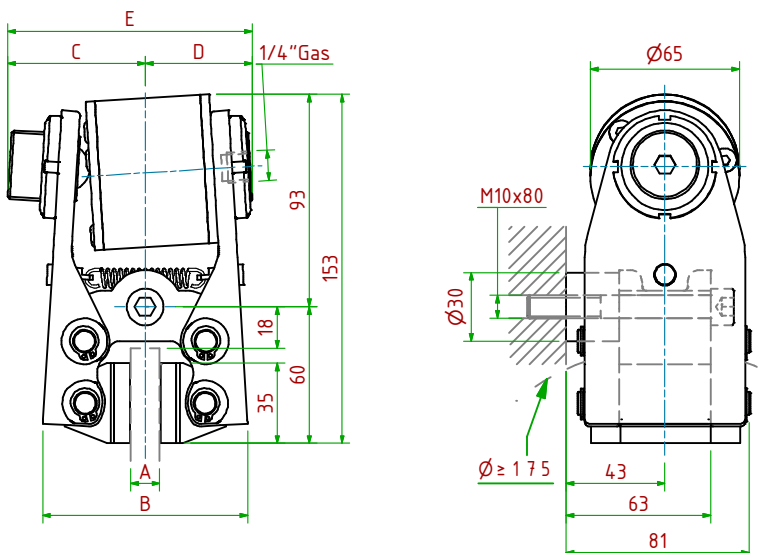
- Pressione di Apertura/Release Pressure: **Pa= 6bar** - Volume Max Cilindro/Max Cylinder Volume: **11cm<sup>3</sup>**
- Coppia Frenante/Braking Torque: **Md= [Ftx(Φ(m)/2-0.024(m))]**
- Importante:** La Coppia Frenante Iniziale può essere più bassa del 30%-50% **Warning:** Initial Braking Torque can be lower of 30%-50%
- Usura massima totale Ferodi/Maximum total wear of pads =7mm

MODELLO/ MODEL	CODICE/ CODE	A	B	C	D <sub>Max</sub>	E <sub>Max</sub>	Forza Frenante/Braking Force	Peso
PPB-N001/ 08	19.36.001.02	8	86	60	55	115	Ft= 680N (0bar)	2.9kg
PPB-N001/12.7	19.36.001.03	12.7	90	60	56	116	Ft= 680N (0bar)	3.0kg
PPB-N001/25.4	19.36.001.04	25.4	102	60	63	123	Ft= 680N (0bar)	3.1kg



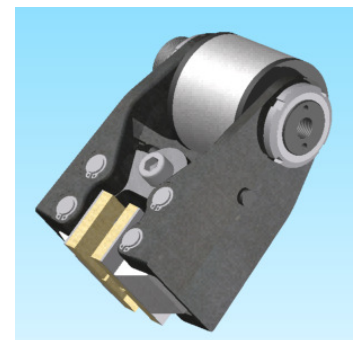
PPB-N002/□□□

Pneumatico Negativo/Pneumatically Released



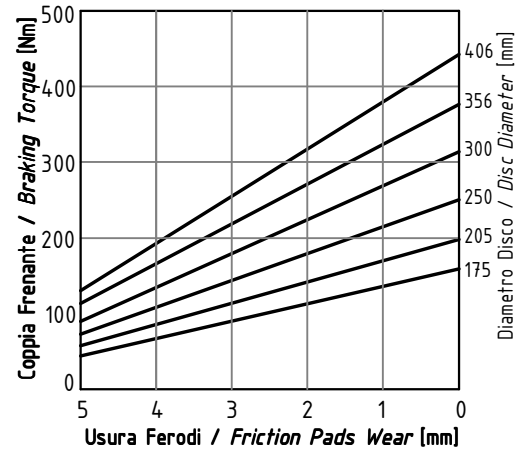
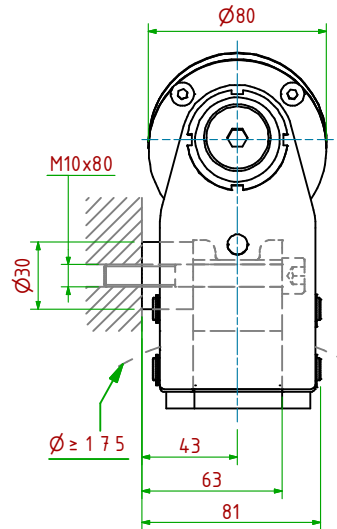
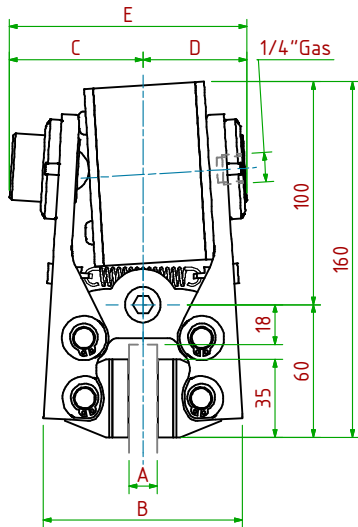
- Pressione di Apertura/Release Pressure: **Pa= 6bar** - Volume Max Cilindro/Max Cylinder Volume: **19cm<sup>3</sup>**
- Coppia Frenante/Braking Torque: **Md= [Ftx(Φ(m)/2-0.024(m))]**
- Importante:** La Coppia Frenante Iniziale può essere più bassa del 30%-50% **Warning:** Initial Braking Torque can be lower of 30%-50%
- Usura massima totale Ferodi/Maximum total wear of pads =7mm

MODELLO/ MODEL	CODICE/ CODE	A	B	C	D <sub>Max</sub>	E <sub>Max</sub>	Forza Frenante/Braking Force	Peso
PPB-N002/ 08	19.36.002.02	8	86	60	55	115	Ft= 1250N (0bar)	3.1kg
PPB-N002/12.7	19.36.002.03	12.7	90	60	56	116	Ft= 1250N (0bar)	3.2kg
PPB-N002/25.4	19.36.002.04	25.4	102	60	63	123	Ft= 1250N (0bar)	3.3kg



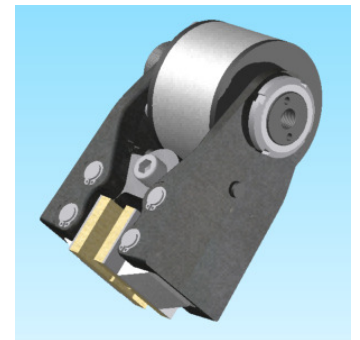
PPB-N003/□□□

Pneumatico Negativo/Pneumatically Released



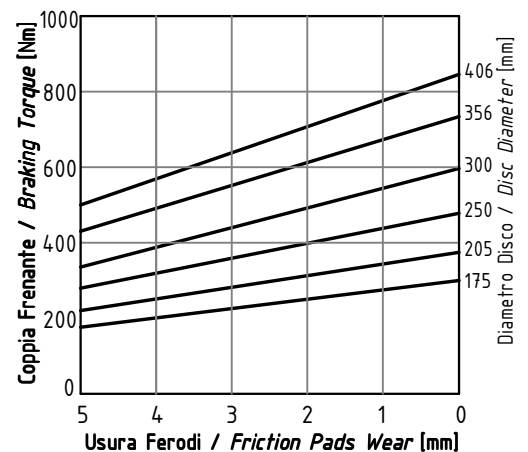
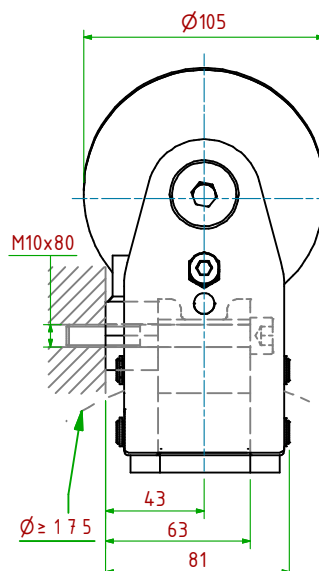
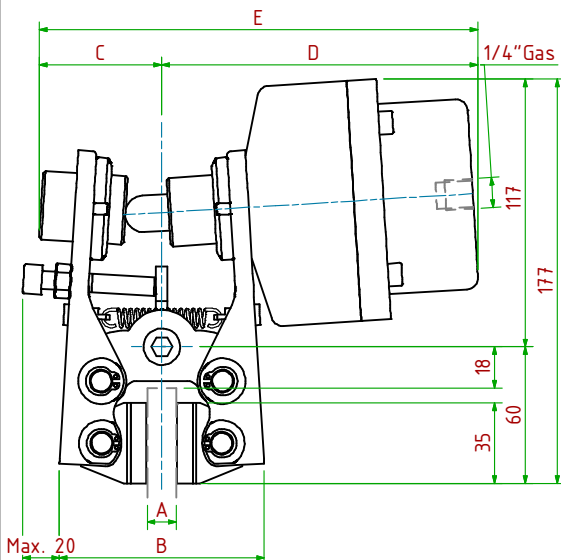
- Pressione di Apertura/Release Pressure: **Pa= 6bar** - Volume Max Cilindro/Max Cylinder Volume: **35 cm<sup>3</sup>**
- Coppia Frenante/Braking Torque: **Md= [Ftx(Φ(m)/2-0.024(m))]**
- Importante:** La Coppia Frenante Iniziale può essere più bassa del 30%-50% **Warning:** Initial Braking Torque can be lower of 30%-50%
- Usura massima totale Ferodi/Maximum total wear of pads =7mm

MODELLO/MODEL	CODICE/ CODE	A	B	C	D <sub>Max</sub>	E <sub>Max</sub>	Forza Frenante/Braking Force	Peso
PPB-N003/ 08	19.36.003.02	8	86	60	55	115	Ft= 2500N (0bar)	3.4kg
PPB-N003/12.7	19.36.003.03	12.7	90	60	56	116	Ft= 2500N (0bar)	3.5kg
PPB-N003/25.4	19.36.003.04	25.4	102	60	63	123	Ft= 2500N (0bar)	3.6kg



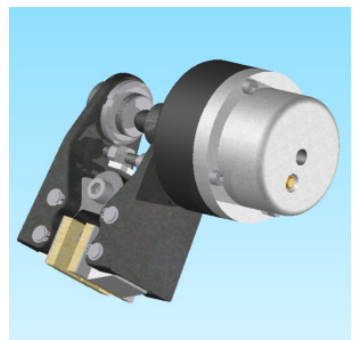
PPB-N004/□□□

Pneumatico Negativo/Pneumatically Released



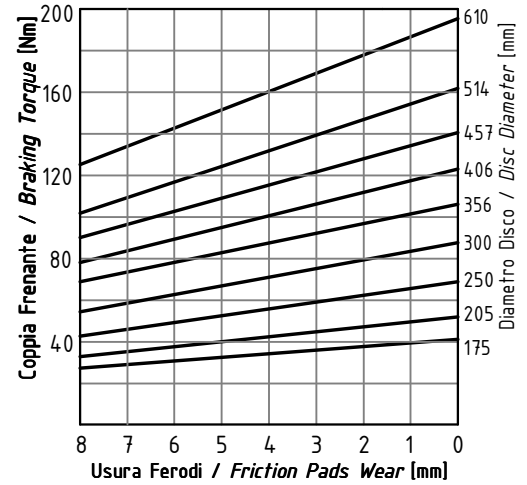
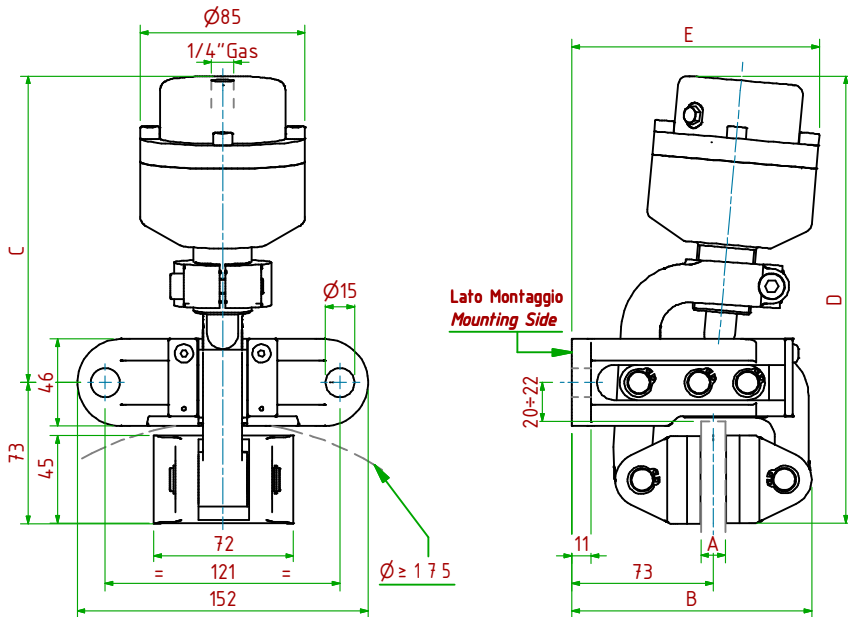
- Pressione di Apertura/Release Pressure: **Pa= 6bar** - Volume Max Cilindro/Max Cylinder Volume: **75 cm<sup>3</sup>**
- Coppia Frenante/Braking Torque: **Md= [Ftx(Φ(m)/2-0.024(m))]**
- Importante:** La Coppia Frenante Iniziale può essere più bassa del 30%-50% **Warning:** Initial Braking Torque can be lower of 30%-50%
- Usura massima totale Ferodi/Maximum total wear of pads =7mm

MODELLO/MODEL	CODICE/ CODE	A	B	C	D <sub>Max</sub>	E <sub>Max</sub>	Forza Frenante/Braking Force	Peso
PPB-N004/ 08	19.36.004.02	8	86	54	138	192	Ft= 4700N (0bar)	5.2kg
PPB-N004/12.7	19.36.004.03	12.7	90	54	138	192	Ft= 4700N (0bar)	5.3kg
PPB-N004/25.4	19.36.004.04	25.4	102	60	147	201	Ft= 4700N (0bar)	5.4kg



PPD-N011/□□□

Pneumatico Negativo/Pneumatically Released

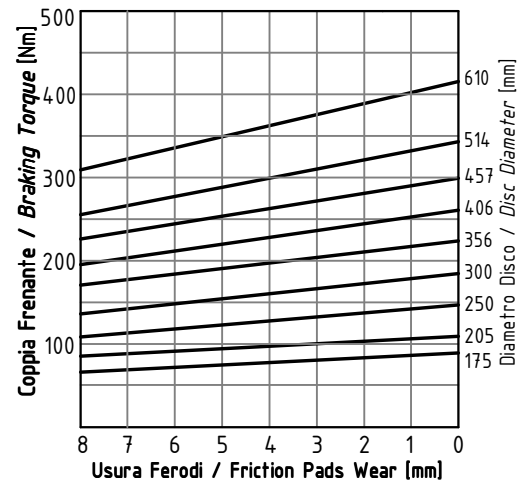
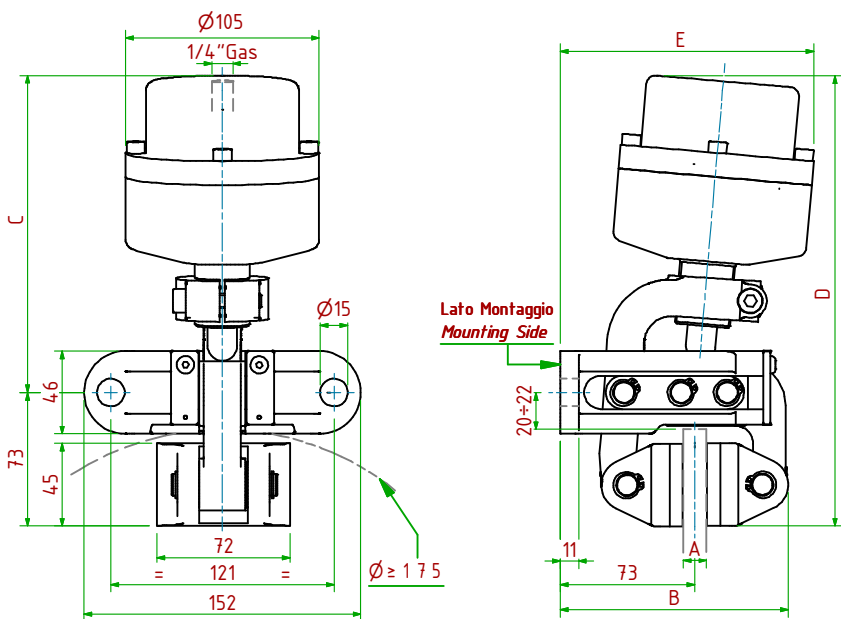


- Pressione di Apertura/Release Pressure: **Pa= 6bar** - Volume Max Cilindro/Max Cylinder Volume: **32cm<sup>3</sup>**
- Coppia Frenante/Braking Torque: **Md= [Ft×(Φ(m)/2-0.029(m))]**
- Importante:** La Coppia Frenante Iniziale può essere più bassa del 30%-50% **Warning:** Initial Braking Torque can be lower of 30%-50%
- Usura Ferodi Massima Totale/Maximum total wear of pads =9mm

MODELLO/MODEL	CODICE/ CODE	A	B	C	D <sub>Max</sub>	E <sub>Max</sub>	Forza Frenante/Braking Force	Peso
PPD-N011/12.7	19.36.011.03	12.7	124	158	231	128	Ft= 710N (0bar)	5.3 kg
PPD-N011/25.4	19.36.011.04	25.4	130	158	231	130	Ft= 710N (0bar)	5.4 kg

PPD-N012/□□□

Pneumatico Negativo/Pneumatically Released

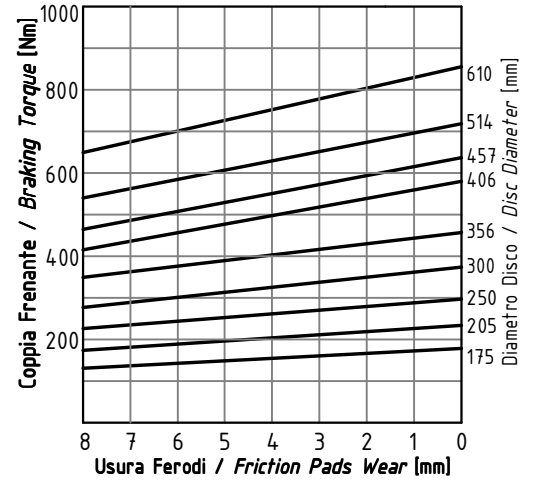
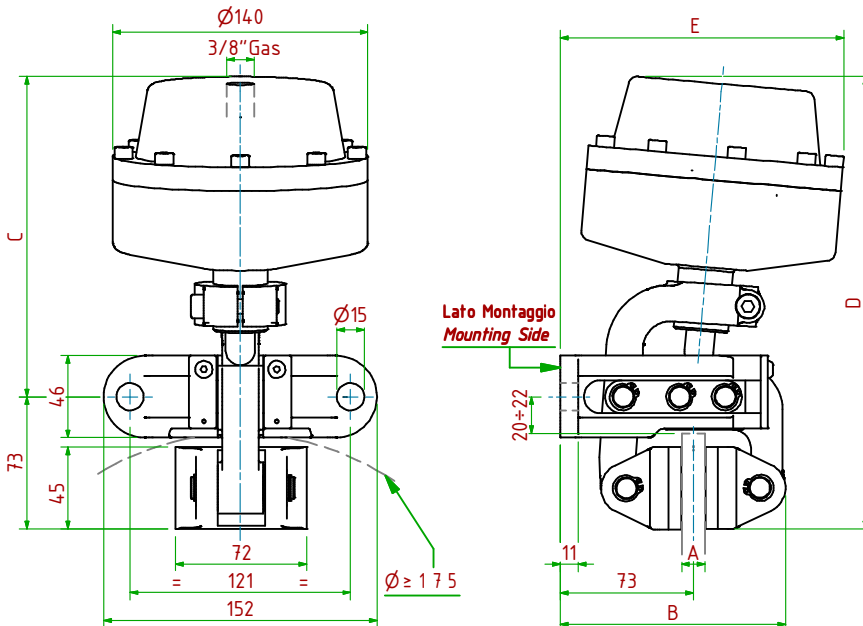


- Pressione di Apertura/Release Pressure: **Pa= 6bar** - Volume Max Cilindro/Max Cylinder Volume: **75cm<sup>3</sup>**
- Coppia Frenante/Braking Torque: **Md= [Ft×(Φ(m)/2-0.029(m))]**
- Importante:** La Coppia Frenante Iniziale può essere più bassa del 30%-50% **Warning:** Initial Braking Torque can be lower of 30%-50%
- Usura Ferodi Massima Totale/Maximum total wear of pads =9mm

MODELLO/MODEL	CODICE/ CODE	A	B	C	D <sub>Max</sub>	E <sub>Max</sub>	Forza Frenante/Braking Force	Peso
PPD-N012/12.7	19.36.012.03	12.7	124	172	245	137	Ft= 1500N (0bar)	6.3 kg
PPD-N012/25.4	19.36.012.04	25.4	130	172	245	144	Ft= 1500N (0bar)	6.4 kg

PPD-N013/□□□

Pneumatico Negativo/Pneumatically Released

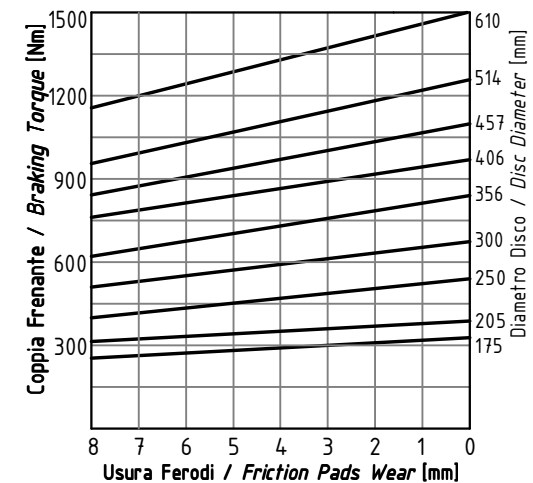
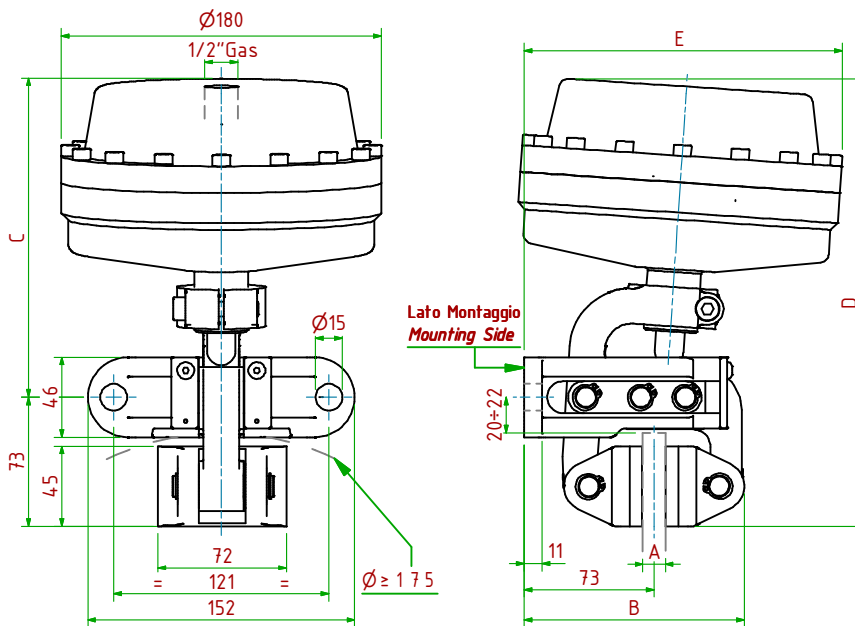


- Pressione di Apertura/Release Pressure:  $P_a = 6\text{bar}$  - Volume Max Cilindro/Max Cylinder Volume:  $160\text{cm}^3$
- Coppia Frenante/Braking Torque:  $M_d = [F_t x (\Phi(m)/2 - 0.029(m))]$
- Importante:** La Coppia Frenante Iniziale può essere più bassa del 30%-50% **Warning:** Initial Braking Torque can be lower of 30%-50%
- Usura Ferodi Massima Totale/Maximum total wear of pads = 9mm

MODELLO/ MODEL	CODICE/ CODE	A	B	C	D <sub>Max</sub>	E <sub>Max</sub>	Forza Frenante/Braking Force	Peso
PPD-N013/12.7	19.36.013.03	12.7	124	177	250	156	F <sub>t</sub> = 3100N (0bar)	7.8 kg
PPD-N013/25.4	19.36.013.04	25.4	130	177	250	159	F <sub>t</sub> = 3100N (0bar)	7.9 kg

PPD-N014/□□□

Pneumatico Negativo/Pneumatically Released



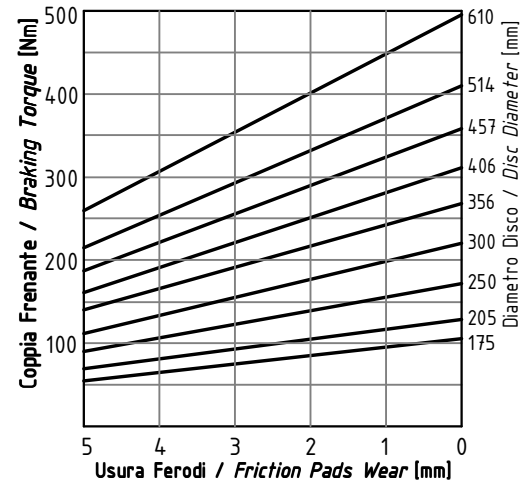
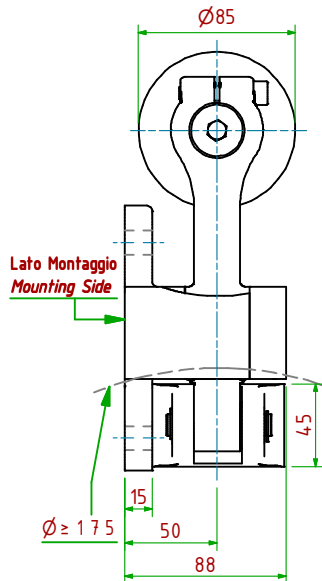
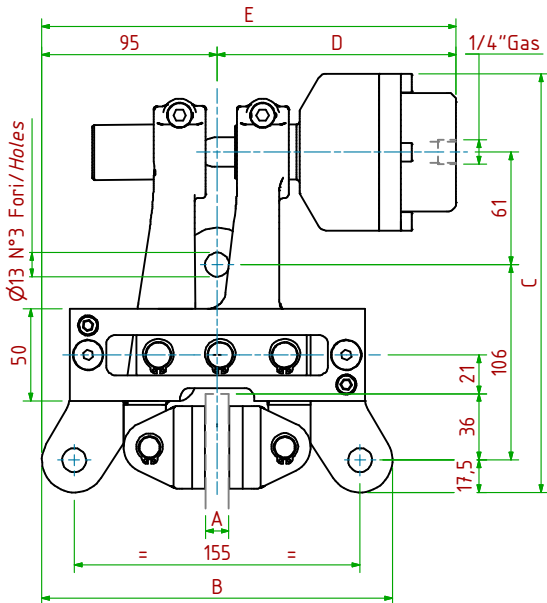
- Pressione di Apertura/Release Pressure:  $P_a = 6\text{bar}$  - Volume Max Cilindro/Max Cylinder Volume:  $285\text{cm}^3$
- Coppia Frenante/Braking Torque:  $M_d = [F_t x (\Phi(m)/2 - 0.029(m))]$
- Importante:** La Coppia Frenante Iniziale può essere più bassa del 30%-50% **Warning:** Initial Braking Torque can be lower of 30%-50%
- Usura Ferodi Massima Totale/Maximum total wear of pads = 9mm

MODELLO/ MODEL	CODICE/ CODE	A	B	C	D <sub>Max</sub>	E <sub>Max</sub>	Forza Frenante/Braking Force	Peso
PPD-N014/12.7	19.36.014.03	12.7	124	182	255	182	F <sub>t</sub> = 5500N (0bar)	10.3kg
PPD-N014/25.4	19.36.014.04	25.4	130	182	255	182	F <sub>t</sub> = 5500N (0bar)	10.4kg



PPF-N021/□□□

Pneumatico Negativo/Pneumatically Released



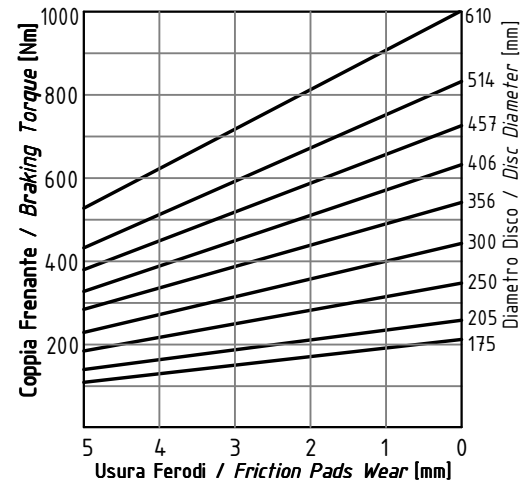
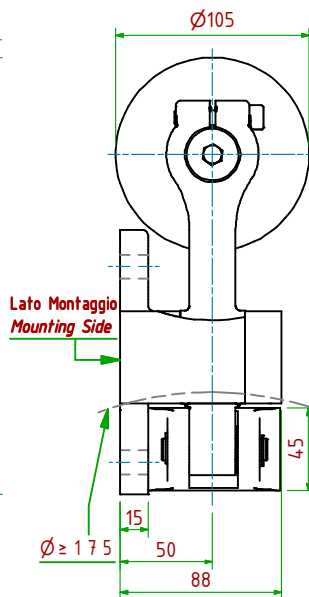
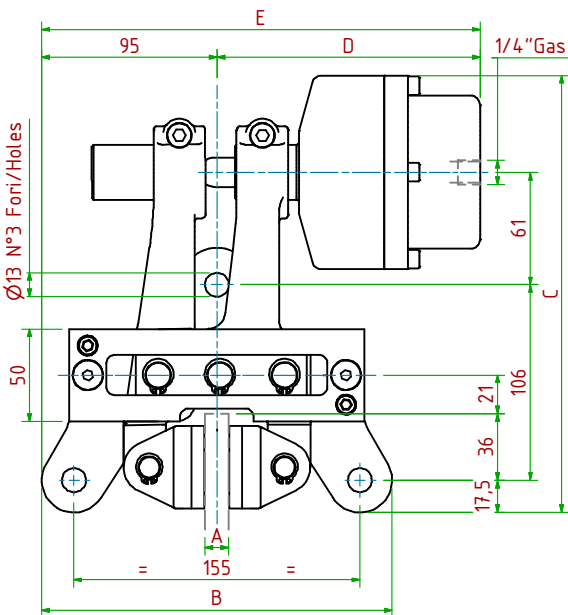
- Pressione di Apertura/Release Pressure: **Pa= 6bar** - Volume Max Cilindro/Max Cylinder Volume: **32cm<sup>3</sup>**
- Coppia Frenante/Braking Torque: **Md= [Ft×(Φ(m)/2-0.029(m))]**
- Importante:** La Coppia Frenante Iniziale può essere più bassa del 30%-50% **Warning:** Initial Braking Torque can be lower of 30%-50%
- Usura Ferodi Massima Totale/Maximum total wear of pads =9mm

MODELLO/MODEL	CODICE/ CODE	A	B	C	D <sub>Max</sub>	E <sub>Max</sub>	Forza Frenante/Braking Force	Peso
PPF-N021/12.7	19.36.021.03	12.7	190	227	130	225	Ft= 1800N (0bar)	9.0 kg
PPF-N021/25.4	19.36.021.04	25.4	190	227	132	227	Ft= 1800N (0bar)	9.2 kg



PPF-N022/□□□

Pneumatico Negativo/Pneumatically Released



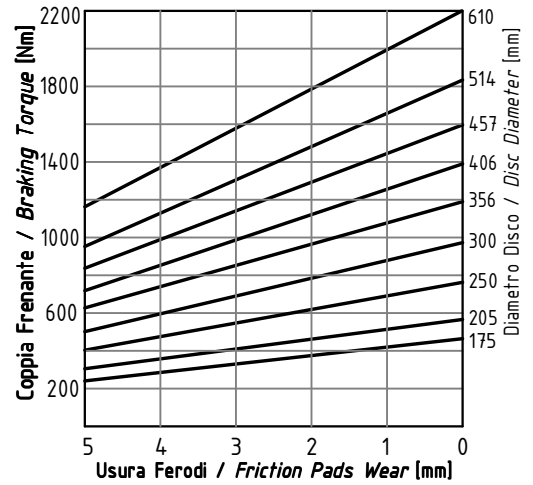
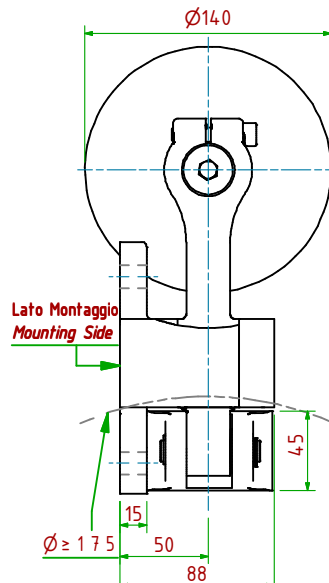
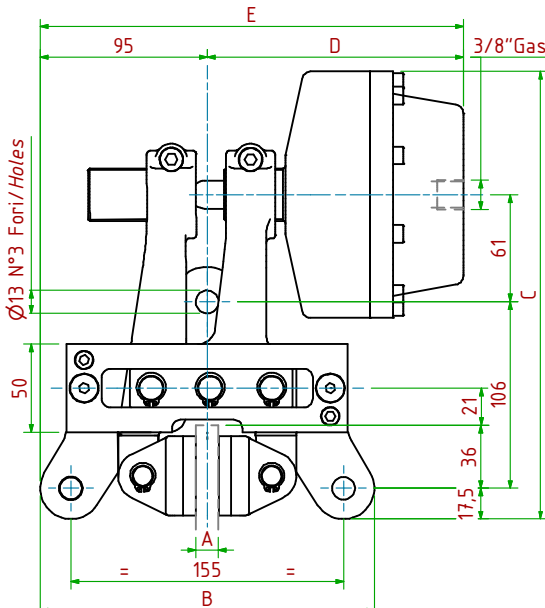
- Pressione di Apertura/Release Pressure: **Pa= 6bar** - Volume Max Cilindro/Max Cylinder Volume: **75cm<sup>3</sup>**
- Coppia Frenante/Braking Torque: **Md= [Ft×(Φ(m)/2-0.029(m))]**
- Importante:** La Coppia Frenante Iniziale può essere più bassa del 30%-50% **Warning:** Initial Braking Torque can be lower of 30%-50%
- Usura Ferodi Massima Totale/Maximum total wear of pads =9mm

MODELLO/MODEL	CODICE/ CODE	A	B	C	D <sub>Max</sub>	E <sub>Max</sub>	Forza Frenante/Braking Force	Peso
PPF-N022/12.7	19.36.022.03	12.7	190	237	143	238	Ft= 3650N (0bar)	10.1 kg
PPF-N022/25.4	19.36.022.04	25.4	190	237	145	240	Ft= 3650N (0bar)	10.3 kg



PPF-N023/ □ □ □

Pneumatico Negativo/Pneumatically Released



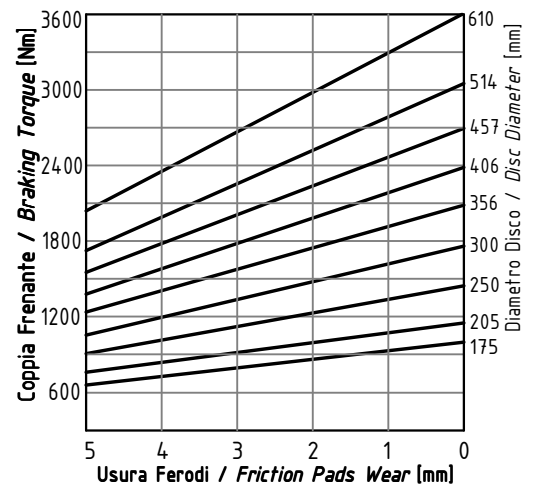
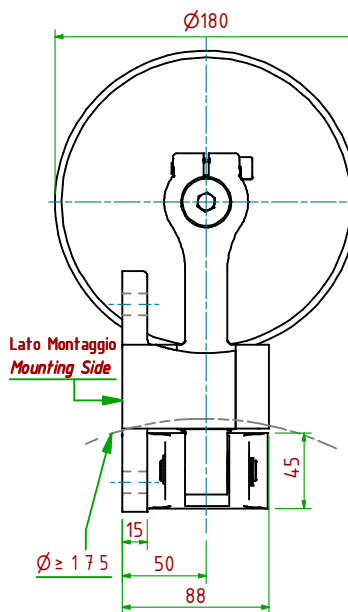
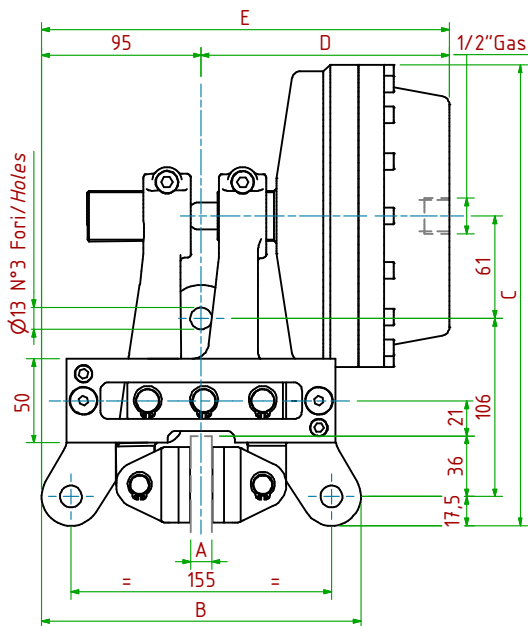
- Pressione di Apertura/Release Pressure: **Pa= 6bar** - Volume Max Cilindro/Max Cylinder Volume: **160cm<sup>3</sup>**
- Coppia Frenante/Braking Torque: **Md= [Ft x (Φ(m)/2 - 0.029(m))]**
- Importante:** La Coppia Frenante Iniziale può essere più bassa del 30%-50% **Warning:** Initial Braking Torque can be lower of 30%-50%
- Usura Ferodi Massima Totale/Maximum total wear of pads =9mm

MODELLO/MODEL	CODICE/ CODE	A	B	C	D <sub>Max</sub>	E <sub>Max</sub>	Forza Frenante/Braking Force	Peso
PPF-N023/12.7	19.36.023.03	12.7	190	255	146	241	Ft= 7500N (0bar)	11.8 kg
PPF-N023/25.4	19.36.023.04	25.4	190	255	148	24.3	Ft= 7500N (0bar)	12.0kg



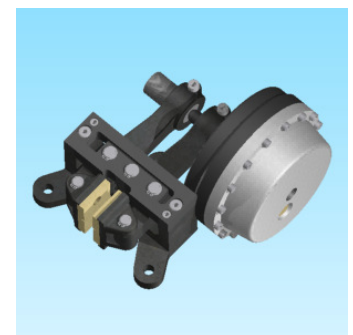
PPF-N024/ □ □ □

Pneumatico Negativo/Pneumatically Released



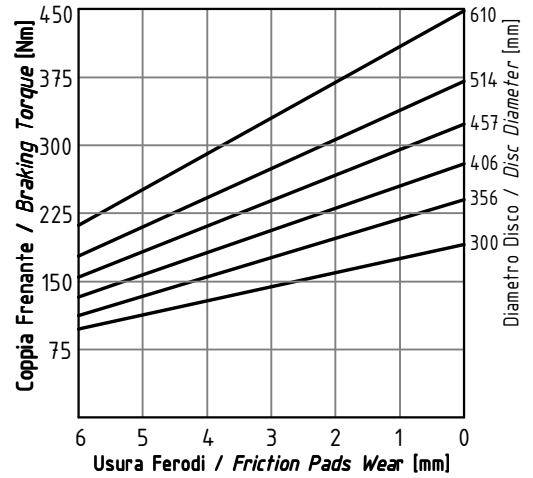
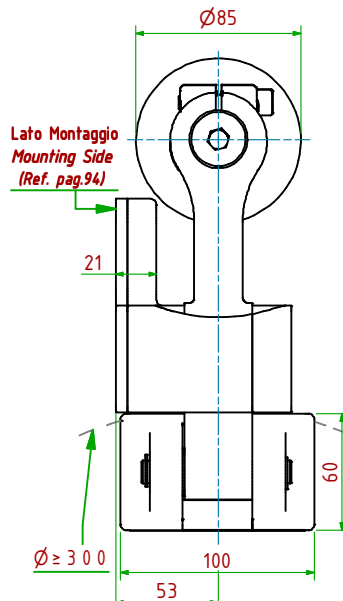
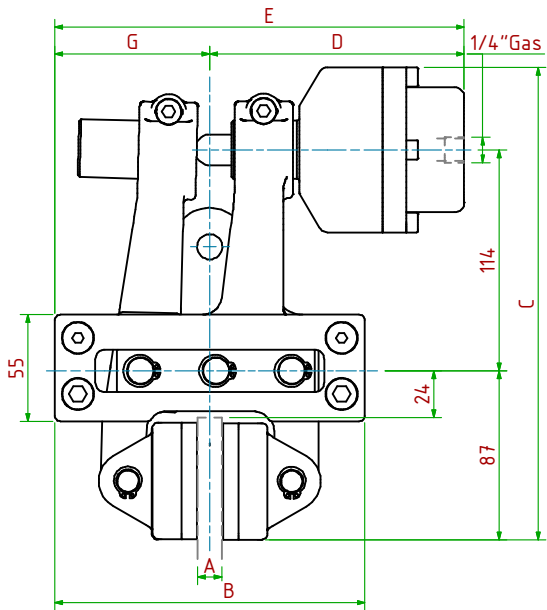
- Pressione di Apertura/Release Pressure: **Pa= 6bar** - Volume Max Cilindro/Max Cylinder Volume: **285cm<sup>3</sup>**
- Coppia Frenante/Braking Torque: **Md= [Ft x (Φ(m)/2 - 0.029(m))]**
- Importante:** La Coppia Frenante Iniziale può essere più bassa del 30%-50% **Warning:** Initial Braking Torque can be lower of 30%-50%
- Usura Ferodi Massima Totale/Maximum total wear of pads =9mm

MODELLO/MODEL	CODICE/ CODE	A	B	C	D <sub>Max</sub>	E <sub>Max</sub>	Forza Frenante/Braking Force	Peso
PPF-N024/12.7	19.36.024.03	12.7	190	275	148	243	Ft= 13170N (0bar)	14.1 kg
PPF-N024/25.4	19.36.024.04	25.4	190	275	150	245	Ft= 13170N (0bar)	14.3kg



PPH-N031/□□□

Pneumatico Negativo/Pneumatically Released

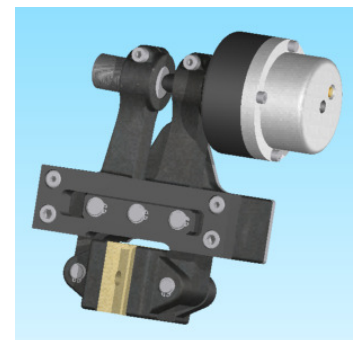
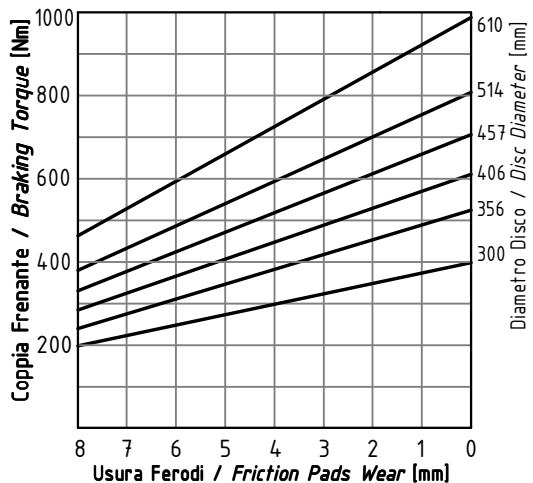
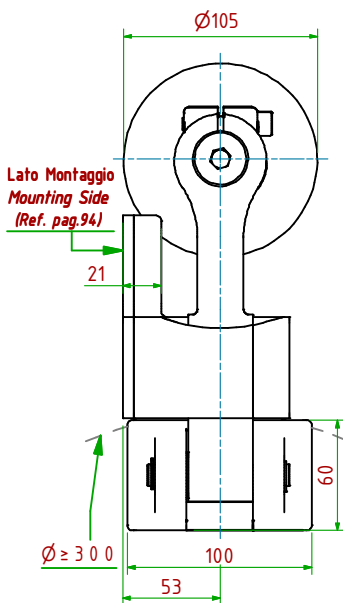
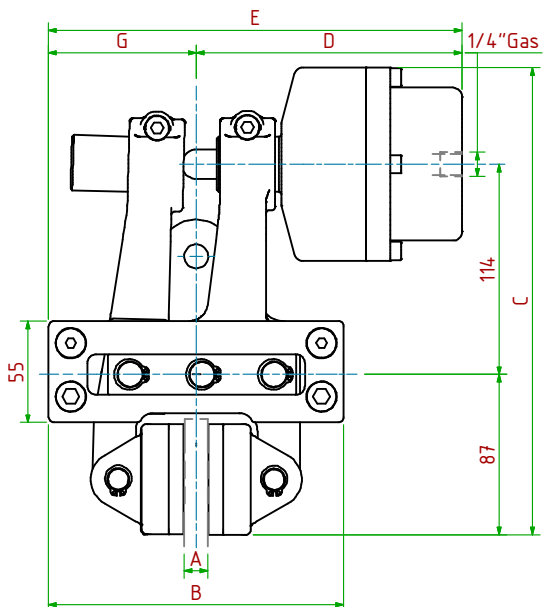


- Pressione di Apertura/Release Pressure: **Pa= 6bar** - Volume Max Cilindro/Max Cylinder Volume: **32cm<sup>3</sup>**
- Coppia Frenante/Braking Torque: **Md= [Ftx(Φ(m)/2-0.033(m))]**
- Importante:** La Coppia Frenante Iniziale può essere più bassa del 30%-50% **Warning:** Initial Braking Torque can be lower of 30%-50%
- Usura Ferodi Massima Totale/Maximum total wear of pads =9mm

MODELLO/MODEL	CODICE/ CODE	A	B	C	D <sub>Max</sub>	E <sub>Max</sub>	G	Forza Frenante/Braking Force	Peso
PPH-N031/12.7	19.36.031.03	12.7	160	24.4	131	211	80	Ft= 1650N (0bar)	11.0 kg
PPH-N031/25.4	19.36.031.04	25.4	180	24.4	136	226	90	Ft= 1650N (0bar)	11.4 kg

PPH-N032/□□□

Pneumatico Negativo/Pneumatically Released

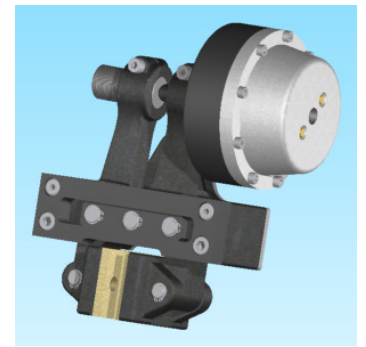
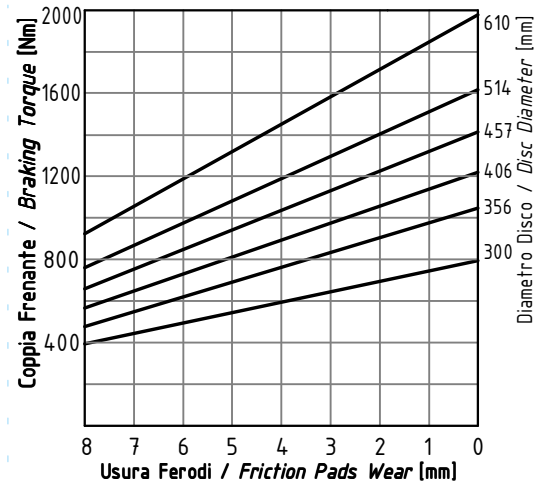
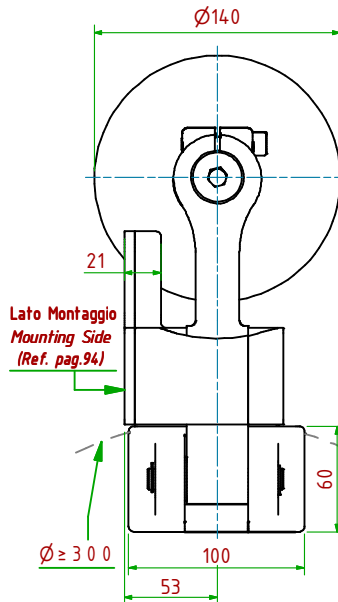
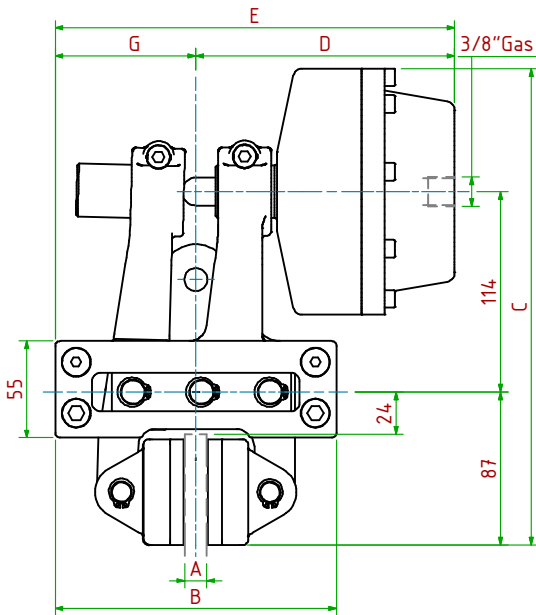


- Pressione di Apertura/Release Pressure: **Pa= 6bar** - Volume Max Cilindro/Max Cylinder Volume: **75cm<sup>3</sup>**
- Coppia Frenante/Braking Torque: **Md= [Ftx(Φ(m)/2-0.033(m))]**
- Importante:** La Coppia Frenante Iniziale può essere più bassa del 30%-50% **Warning:** Initial Braking Torque can be lower of 30%-50%
- Usura Ferodi Massima Totale/Maximum total wear of pads =9mm

MODELLO/MODEL	CODICE/ CODE	A	B	C	D <sub>Max</sub>	E <sub>Max</sub>	G	Forza Frenante/Braking Force	Peso
PPH-N032/12.7	19.36.032.03	12.7	160	25.4	14.4	224	80	Ft= 3400N (0bar)	12.0kg
PPH-N032/25.4	19.36.032.04	25.4	180	25.4	139	239	90	Ft= 3400N (0bar)	12.4kg

PPH-N033/□□□

Pneumatico Negativo/Pneumatically Released

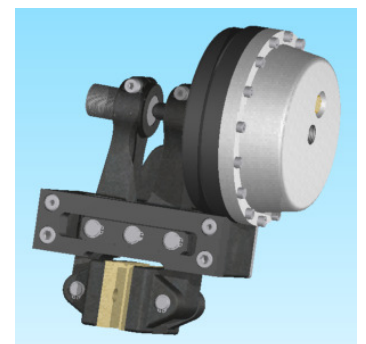
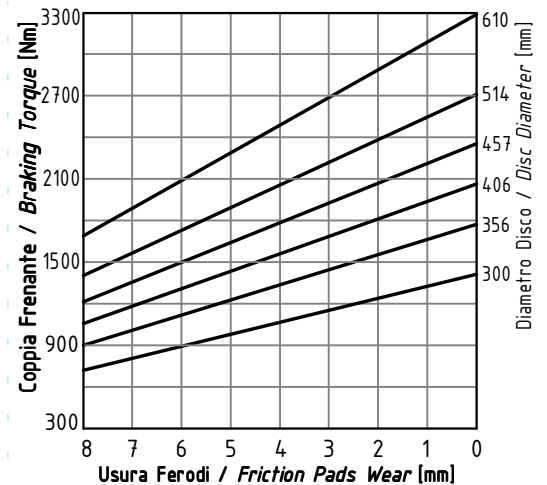
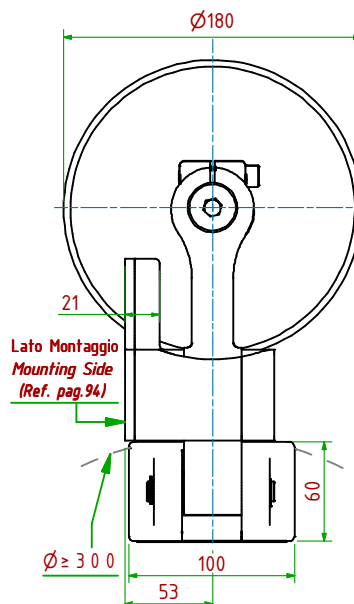
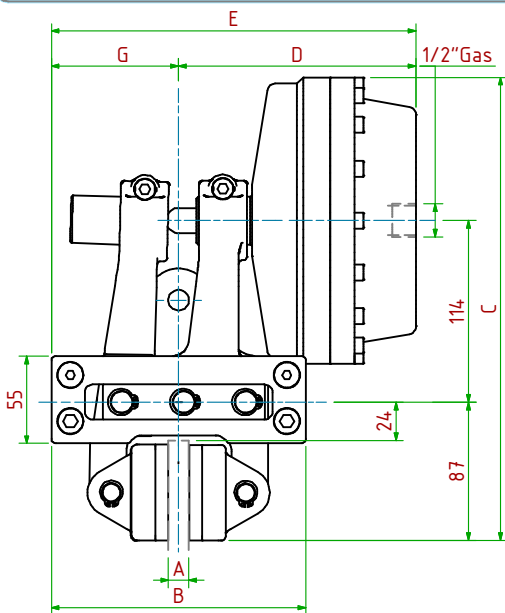


- Pressione di Apertura/Release Pressure: **Pa= 6bar** - Volume Max Cilindro/Max Cylinder Volume: **160cm<sup>3</sup>**
- Coppia Frenante/Braking Torque: **Md= [Ftx(Φ(m)/2-0.033(m))]**
- Importante:** La Coppia Frenante Iniziale può essere più bassa del 30%-50% **Warning:** Initial Braking Torque can be lower of 30%-50%
- Usura Ferodi Massima Totale/Maximum total wear of pads =9mm

MODELLO/ MODEL	CODICE/ CODE	A	B	C	D <sub>Max</sub>	E <sub>Max</sub>	G	Forza Frenante/Braking Force	Peso
PPH-N033/12.7	19.36.033.03	12.7	160	271	147	227	80	Ft= 6900N (0bar)	13.5kg
PPH-N033/25.4	19.36.033.04	25.4	180	271	152	242	90	Ft= 6900N (0bar)	13.9kg

PPH-N034/□□□

Pneumatico Negativo/Pneumatically Released

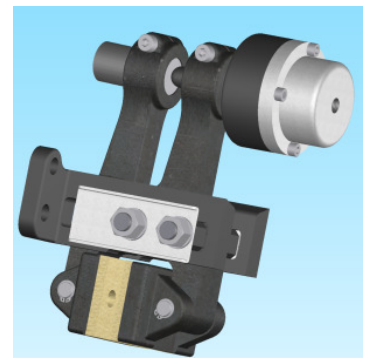
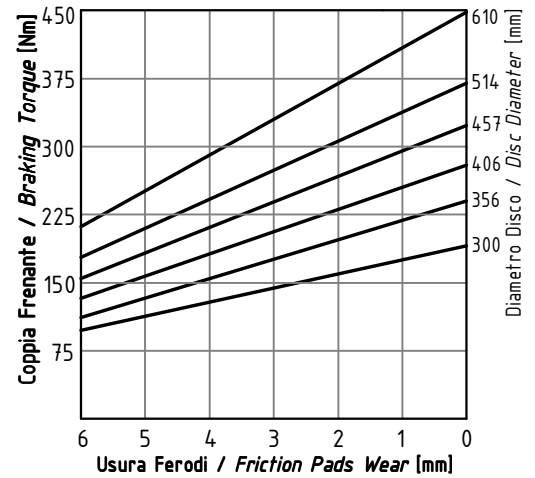
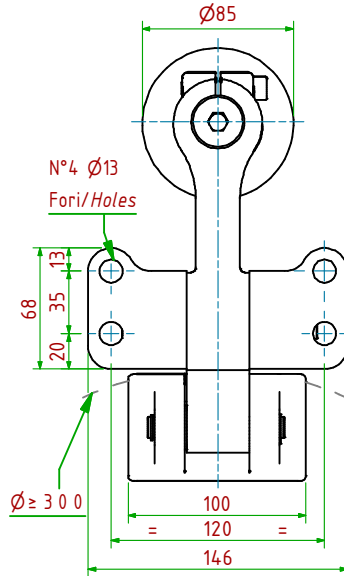
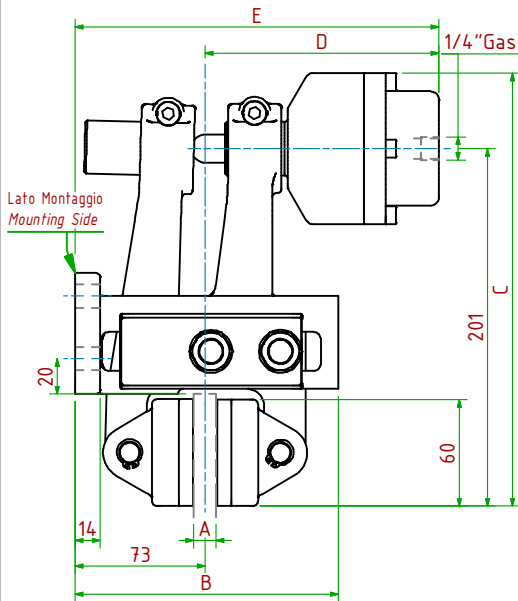


- Pressione di Apertura/Release Pressure: **Pa= 6bar** - Volume Max Cilindro/Max Cylinder Volume: **285cm<sup>3</sup>**
- Coppia Frenante/Braking Torque: **Md= [Ftx(Φ(m)/2-0.033(m))]**
- Importante:** La Coppia Frenante Iniziale può essere più bassa del 30%-50% **Warning:** Initial Braking Torque can be lower of 30%-50%
- Usura Ferodi Massima Totale/Maximum total wear of pads =9mm

MODELLO/ MODEL	CODICE/ CODE	A	B	C	D <sub>Max</sub>	E <sub>Max</sub>	G	Forza Frenante/Braking Force	Peso
PPH-N034/12.7	19.36.034.03	12.7	160	291	149	229	80	Ft= 12100N (0bar)	16.0kg
PPH-N034/25.4	19.36.034.04	25.4	180	291	154	244	90	Ft= 12100N (0bar)	16.4kg

PPHP-N310/□□□

Pneumatico Negativo / Pneumatically Released

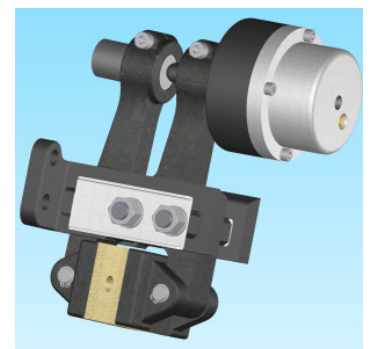
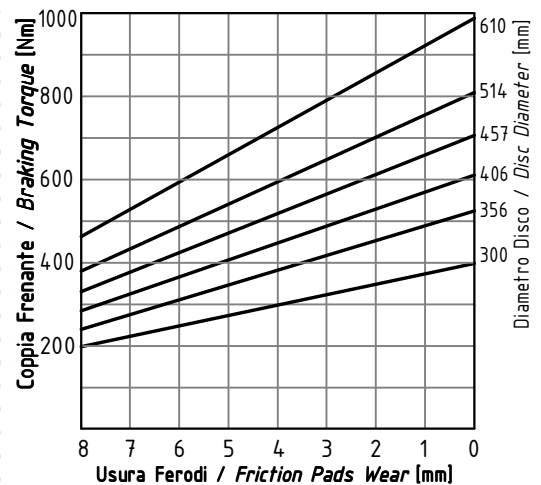
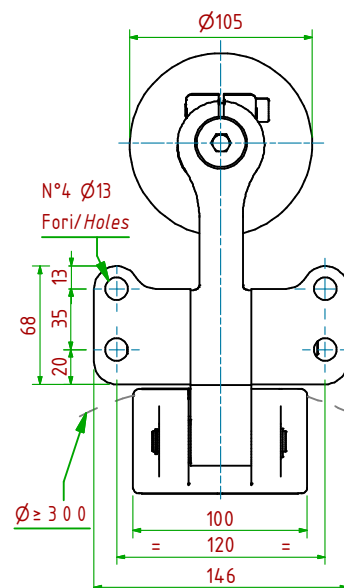
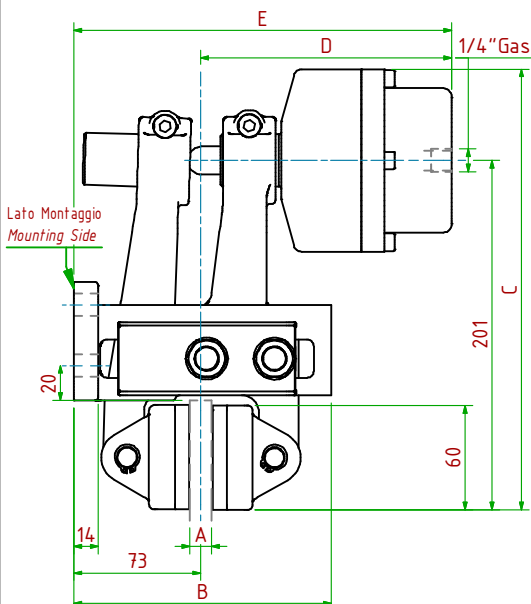


- Pressione di Apertura/Release Pressure: **Pa= 6bar** - Volume Max Cilindro/Max Cylinder Volume: **32cm<sup>3</sup>**
- Coppia Frenante/Braking Torque: **Md= [Ftx(Φ(m)/2-0.033(m))]**
- Importante:** La Coppia Frenante Iniziale può essere più bassa del 30%-50% **Warning:** Initial Braking Torque can be lower of 30%-50%
- Usura Ferodi Massima Totale/Maximum total wear of pads =9mm

MODELLO / MODEL	CODICE / CODE	A	B	C	D <sub>Max</sub>	E <sub>Max</sub>	Forza Frenante/Braking Force	Peso
PPHP-N310/12.7	19.36.310.03	12.7	148	244	131	204	Ft= 1650N (0bar)	9.5 kg
PPHP-N310/25.4	19.36.310.04	25.4	148	244	137	210	Ft= 1650N (0bar)	9.7 kg

PPHP-N320/□□□

Pneumatico Negativo / Pneumatically Released

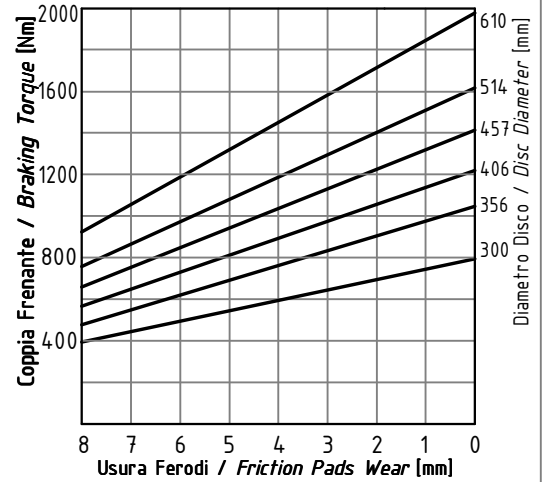
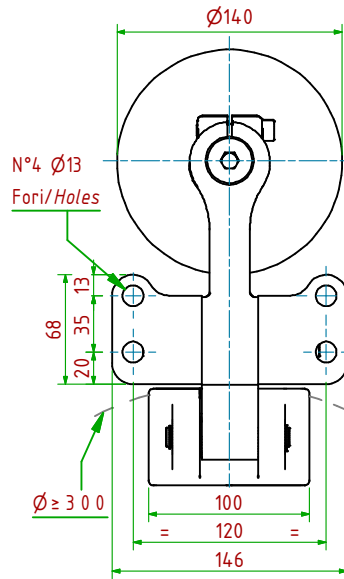
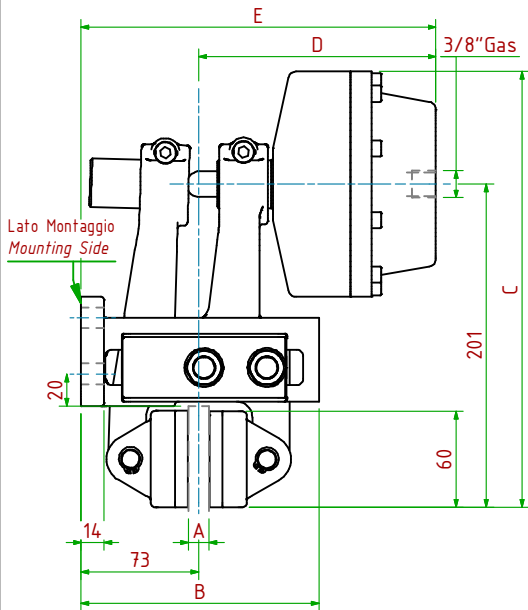


- Pressione di Apertura/Release Pressure: **Pa= 6bar** - Volume Max Cilindro/Max Cylinder Volume: **75cm<sup>3</sup>**
- Coppia Frenante/Braking Torque: **Md= [Ftx(Φ(m)/2-0.033(m))]**
- Importante:** La Coppia Frenante Iniziale può essere più bassa del 30%-50% **Warning:** Initial Braking Torque can be lower of 30%-50%
- Usura Ferodi Massima Totale/Maximum total wear of pads =9mm

MODELLO / MODEL	CODICE / CODE	A	B	C	D <sub>Max</sub>	E <sub>Max</sub>	Forza Frenante/Braking Force	Peso
PPHP-N320/12.7	19.36.320.03	12.7	148	254	144	217	Ft= 3400N (0bar)	10.5kg
PPHP-N320/25.4	19.36.320.04	25.4	148	254	150	223	Ft= 3400N (0bar)	10.7kg

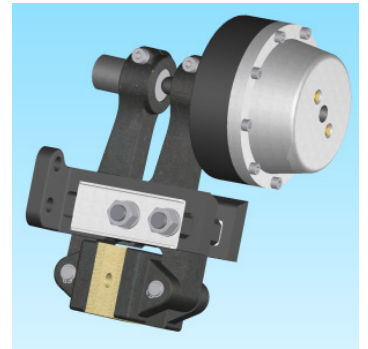
PPHP-N330/□□□

Pneumatico Negativo / Pneumatically Released



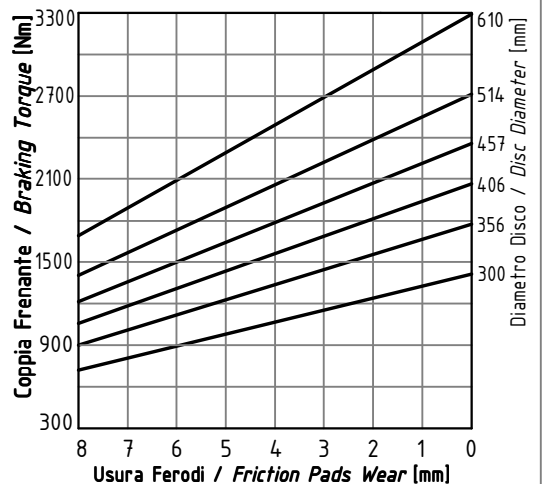
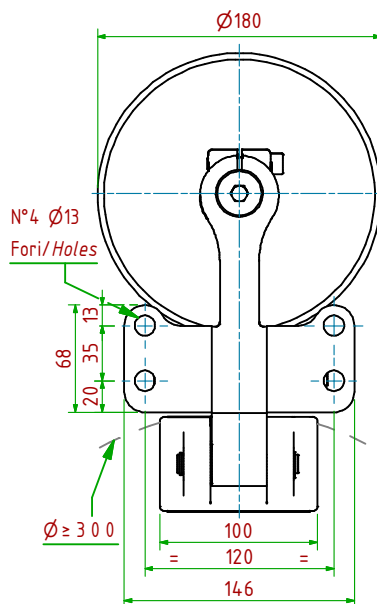
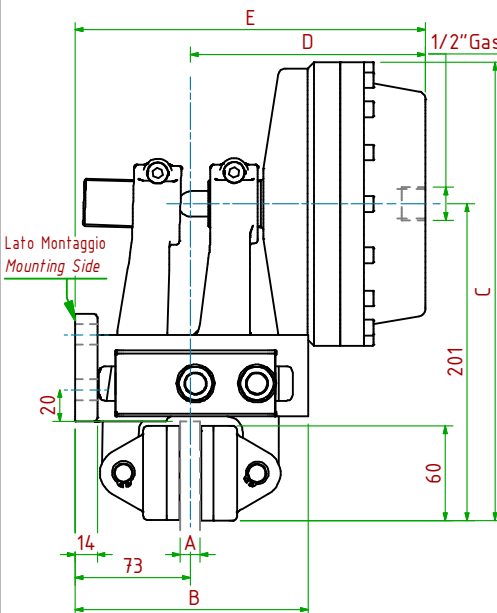
- Pressione di Apertura/Release Pressure: **Pa= 6bar** - Volume Max Cilindro/Max Cylinder Volume: **160cm<sup>3</sup>**
- Coppia Frenante/Braking Torque: **Md= [Ftx(Φ(m)/2-0.033(m))]**
- Importante:** La Coppia Frenante Iniziale può essere più bassa del 30%-50% **Warning:** Initial Braking Torque can be lower of 30%-50%
- Usura Ferodi Massima Totale/Maximum total wear of pads =9mm

MODELLO/MODEL	CODICE/ CODE	A	B	C	D <sub>Max</sub>	E <sub>Max</sub>	Forza Frenante/Braking Force	Peso
PPHP-N330/12.7	19.36.330.03	12.7	148	271	147	220	Ft= 6900N (0bar)	12.0kg
PPHP-N330/25.4	19.36.330.04	25.4	148	271	153	226	Ft= 6900N (0bar)	12.2kg



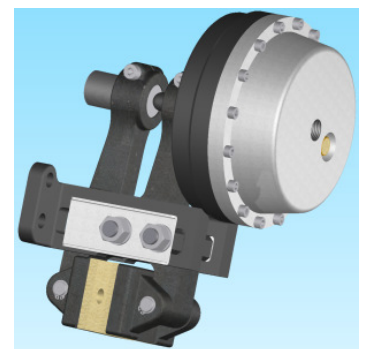
PPHP-N340/□□□

Pneumatico Negativo / Pneumatically Released



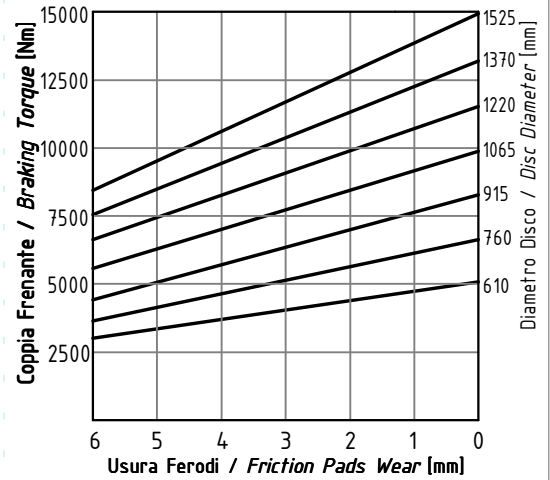
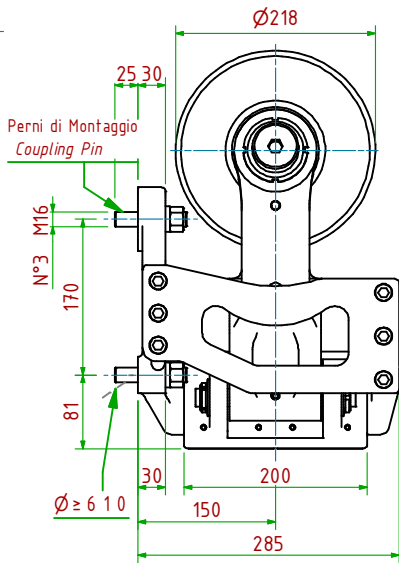
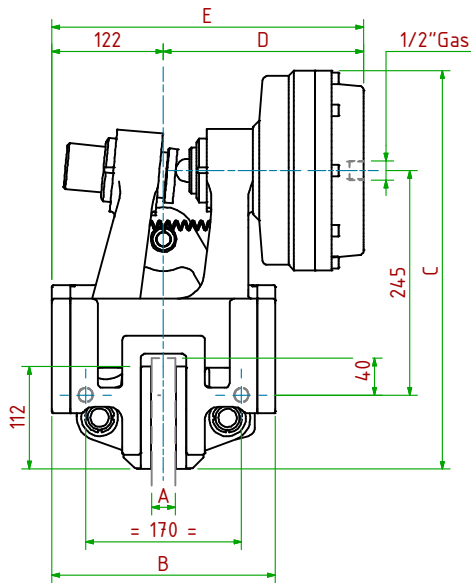
- Pressione di Apertura/Release Pressure: **Pa= 6bar** - Volume Max Cilindro/Max Cylinder Volume: **285cm<sup>3</sup>**
- Coppia Frenante/Braking Torque: **Md= [Ftx(Φ(m)/2-0.033(m))]**
- Importante:** La Coppia Frenante Iniziale può essere più bassa del 30%-50% **Warning:** Initial Braking Torque can be lower of 30%-50%
- Usura Ferodi Massima Totale/Maximum total wear of pads =9mm

MODELLO/MODEL	CODICE/ CODE	A	B	C	D <sub>Max</sub>	E <sub>Max</sub>	Forza Frenante/Braking Force	Peso
PPHP-N340/12.7	19.36.340.03	12.7	148	291	149	222	Ft= 12100N (0bar)	14.5kg
PPHP-N340/25.4	19.36.340.04	25.4	148	291	155	228	Ft= 12100N (0bar)	14.7kg



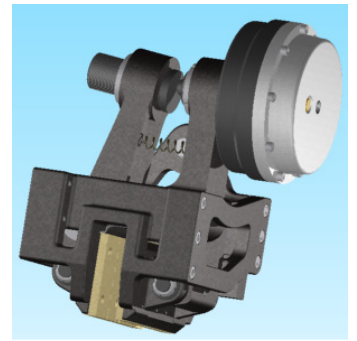
PPT-N064/□□□

Pneumatico Negativo/Pneumatically Released



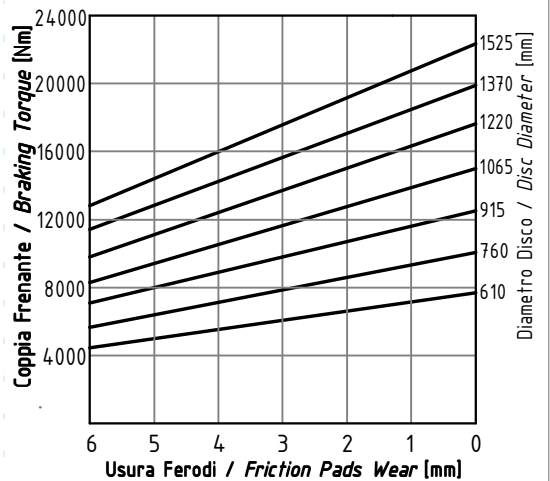
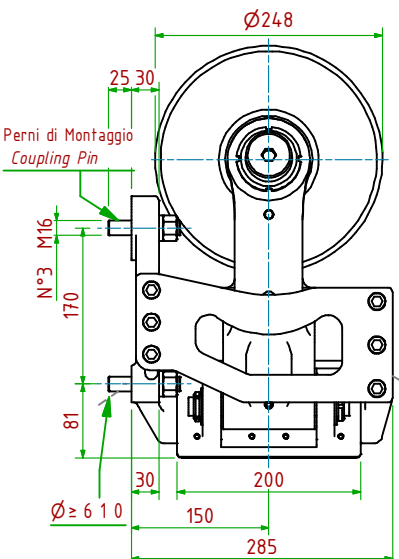
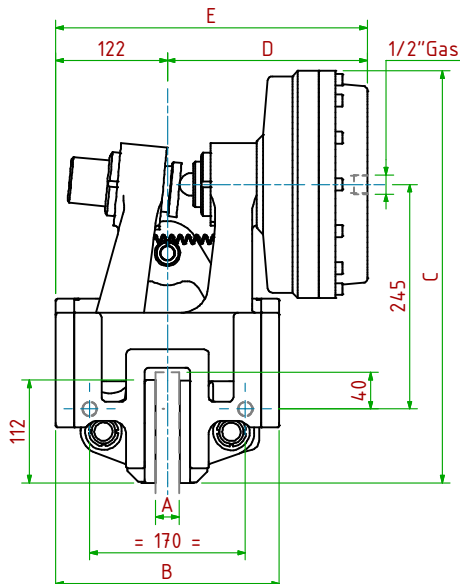
- Pressione di Apertura/Release Pressure: **Pa= 6bar** - Volume Max Cilindro/Max Cylinder Volume: **530cm<sup>3</sup>**
- Coppia Frenante/Braking Torque: **Md= [Ftx(Φ(m)/2-0.065(m))]**  
**Importante:** La Coppia Frenante Iniziale può essere più bassa del 30%-50% **Warning:** Initial Braking Torque can be lower of 30%-50%
- Usura Ferodi Massima Totale/Maximum total wear of pads =12mm

MODELLO/MODEL	CODICE/ CODE	A	B	C	D <sub>Max</sub>	E <sub>Max</sub>	Forza Frenante/Braking Force	Peso
PPT-N064/25.4	19.36.064.04	25.4	244	435	219	341	Ft= 21200N (0bar)	69.8kg
PPT-N064/ 30	19.36.064.05	30	244	435	219	341	Ft= 21200N (0bar)	69.8kg
PPT-N064/ 40	19.36.064.06	40	244	435	224	346	Ft= 21200N (0bar)	69.8kg



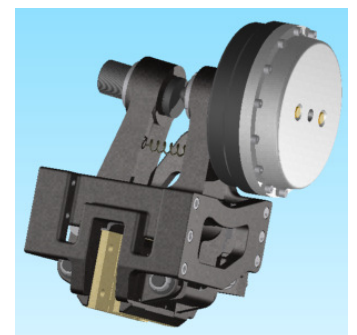
PPT-N066/□□□

Pneumatico Negativo/Pneumatically Released



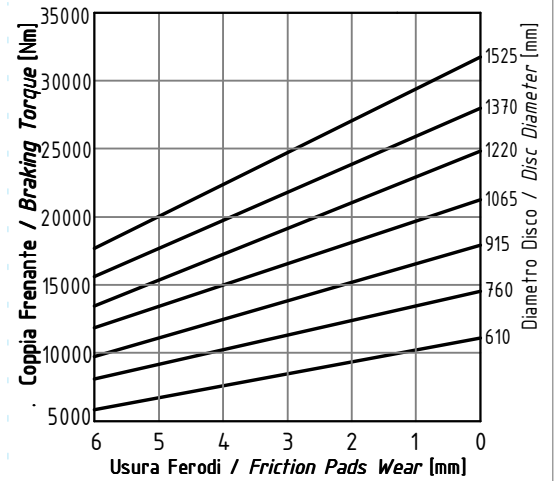
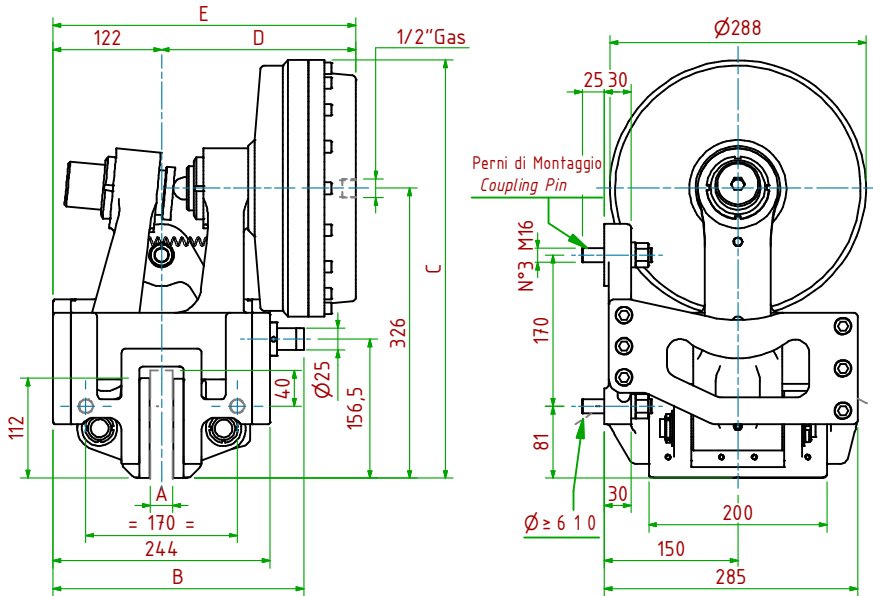
- Pressione di Apertura/Release Pressure: **Pa= 6bar** - Volume Max Cilindro/Max Cylinder Volume: **700cm<sup>3</sup>**
- Coppia Frenante/Braking Torque: **Md= [Ftx(Φ(m)/2-0.065(m))]**  
**Importante:** La Coppia Frenante Iniziale può essere più bassa del 30%-50% **Warning:** Initial Braking Torque can be lower of 30%-50%
- Usura Ferodi Massima Totale/Maximum total wear of pads =12mm

MODELLO/MODEL	CODICE/ CODE	A	B	C	D <sub>Max</sub>	E <sub>Max</sub>	Forza Frenante/Braking Force	Peso
PPT-N066/25.4	19.36.066.04	25.4	244	450	219	341	Ft= 32000N (0bar)	74.2kg
PPT-N066/ 30	19.36.066.05	30	244	450	219	341	Ft= 32000N (0bar)	74.2kg
PPT-N066/ 40	19.36.066.06	40	244	450	224	346	Ft= 32000N (0bar)	74.2kg



PPT-N068/□□□

Pneumatico Negativo/Pneumatically Released



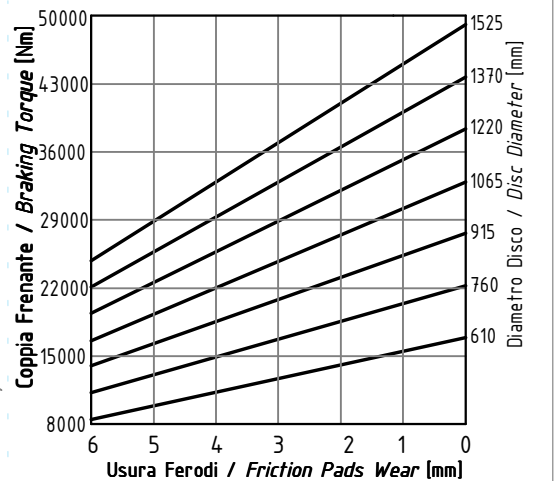
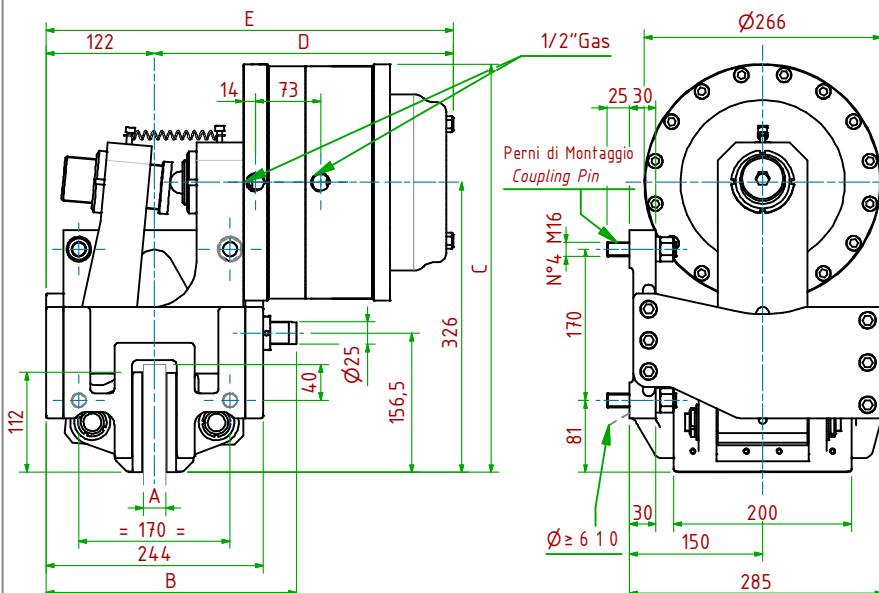
- Pressione di Apertura/Release Pressure: **Pa= 6bar** - Volume Max Cilindro/Max Cylinder Volume: **1000cm<sup>3</sup>**
- Coppia Frenante/Braking Torque: **Md= [Ftx(Φ(m)/2-0.065(m))]**
- Importante:** La Coppia Frenante Iniziale può essere più bassa del 30%-50% **Warning:** Initial Braking Torque can be lower of 30%-50%
- Usura Ferodi Massima Totale/Maximum total wear of pads =12mm

MODELLO/ MODEL	CODICE/ CODE	A	B	C	D <sub>Max</sub>	E <sub>Max</sub>	Forza Frenante/Braking Force	Peso
PPT-N068/25.4	19.36.068.04	25.4	282	470	219	341	Ft= 45500N (0bar)	80.7kg
PPT-N068/ 30	19.36.068.05	30	282	470	219	341	Ft= 45500N (0bar)	80.7kg
PPT-N068/ 40	19.36.068.06	40	287	470	224	346	Ft= 45500N (0bar)	80.7kg



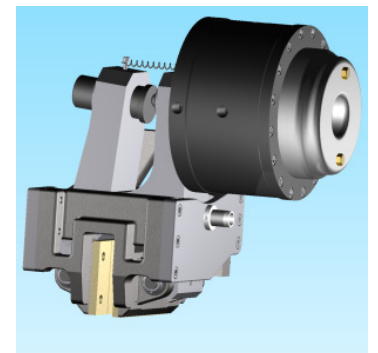
PPT-N070/□□□

Pneumatico Negativo/Pneumatically Released



- Pressione di Apertura/Release Pressure: **Pa= 6bar** - Volume Max Cilindro/Max Cylinder Volume: **1662cm<sup>3</sup>**
- Coppia Frenante/Braking Torque: **Md= [Ftx(Φ(m)/2-0.065(m))]**
- Importante:** La Coppia Frenante Iniziale può essere più bassa del 30%-50% **Warning:** Initial Braking Torque can be lower of 30%-50%
- Usura Ferodi Massima Totale/Maximum total wear of pads =12mm

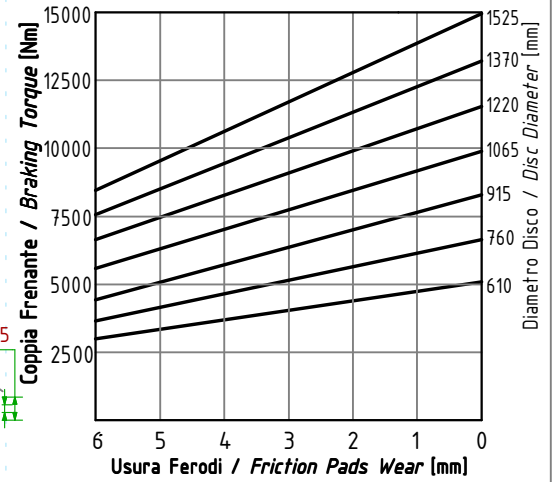
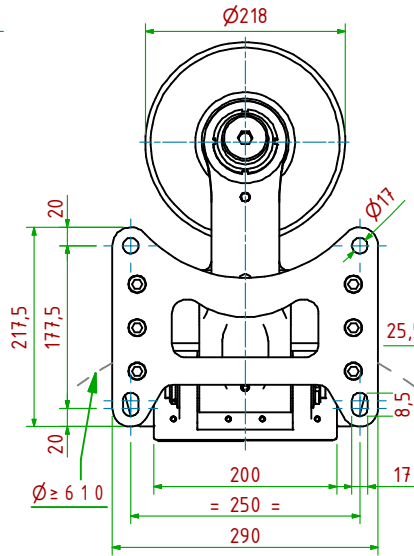
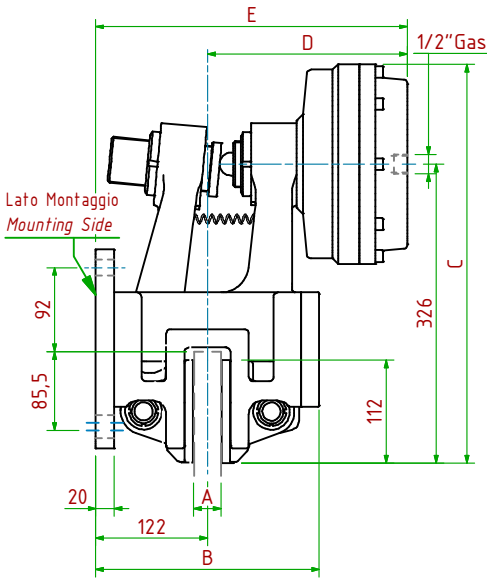
MODELLO/ MODEL	CODICE/ CODE	A	B	C	D <sub>Max</sub>	E <sub>Max</sub>	Forza Frenante/Braking Force	Peso
PPT-N070/25.4	19.36.070.04	25.4	282	459	336	458	Ft= 70500N (0bar)	122 kg
PPT-N070/ 30	19.36.070.05	30	282	459	336	458	Ft= 70500N (0bar)	122 kg
PPT-N070/ 40	19.36.070.06	40	287	459	341	463	Ft= 70500N (0bar)	122 kg





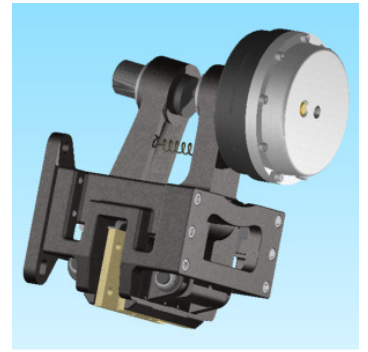
PPTP-N640/ □ □ □

Pneumatico Negativo / Pneumatically Released



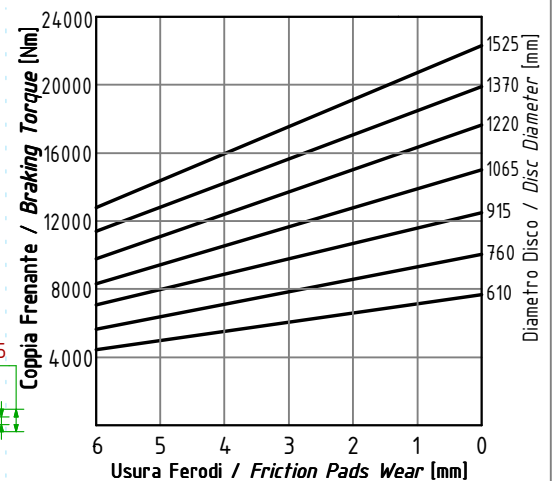
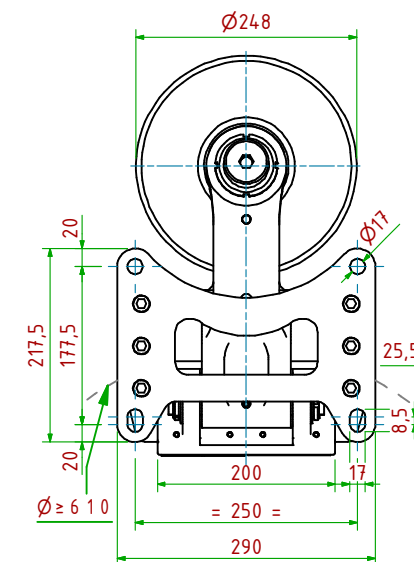
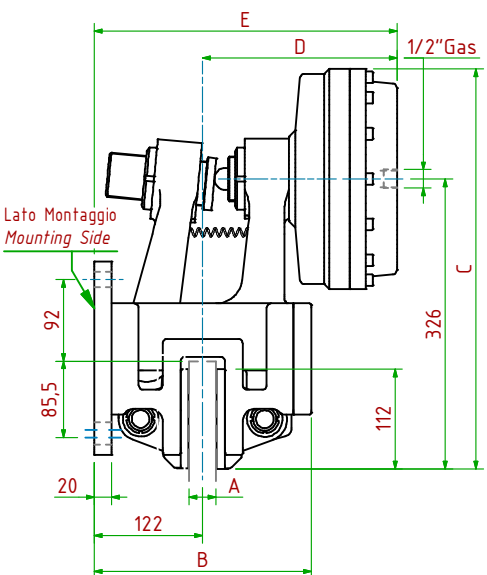
- Pressione di Apertura/Release Pressure: **Pa= 6bar** - Volume Max Cilindro/Max Cylinder Volume: **530cm<sup>3</sup>**
- Coppia Frenante/Braking Torque: **Md= [Ftx(Φ(m))/2-0.065(m)]**
- Importante:** La Coppia Frenante Iniziale può essere più bassa del 30%-50% **Warning:** Initial Braking Torque can be lower of 30%-50%
- Usura Ferodi Massima Totale/Maximum total wear of pads =12mm

MODELLO/ MODEL	CODICE/ CODE	A	B	C	D <sub>Max</sub>	E <sub>Max</sub>	Forza Frenante/Braking Force	Peso
PPTP-N640/25.4	19.36.640.04	25.4	244	435	219	341	Ft= 21200N (0bar)	68.2kg
PPTP-N640/ 30	19.36.640.05	30	244	435	219	341	Ft= 21200N (0bar)	68.2kg
PPTP-N640/ 40	19.36.640.06	40	244	435	224	346	Ft= 21200N (0bar)	68.2kg



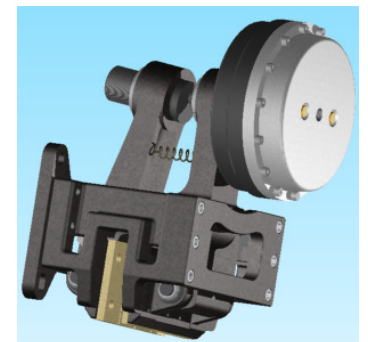
PPTP-N660/ □ □ □

Pneumatico Negativo / Pneumatically Released



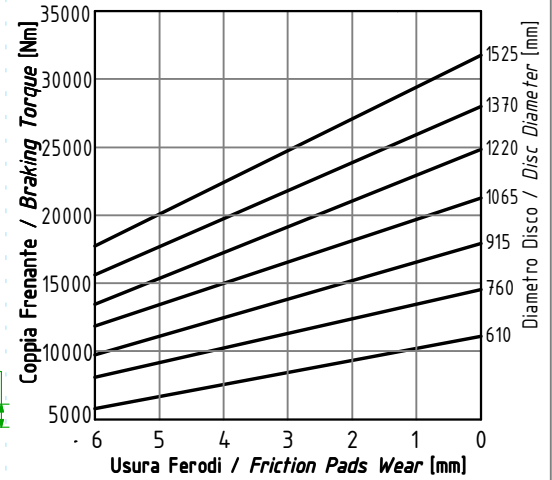
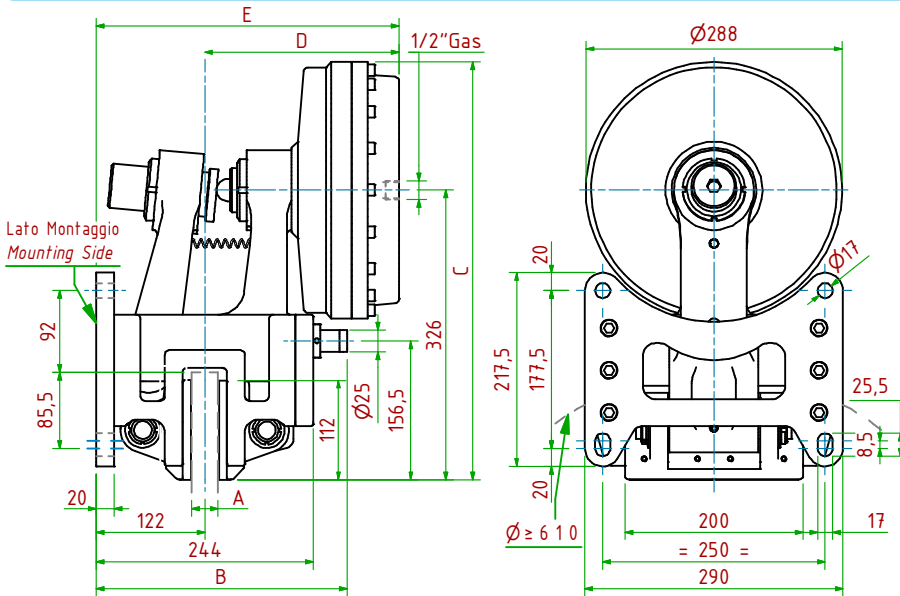
- Pressione di Apertura/Release Pressure: **Pa= 6bar** - Volume Max Cilindro/Max Cylinder Volume: **700cm<sup>3</sup>**
- Coppia Frenante/Braking Torque: **Md= [Ftx(Φ(m))/2-0.065(m)]**
- Importante:** La Coppia Frenante Iniziale può essere più bassa del 30%-50% **Warning:** Initial Braking Torque can be lower of 30%-50%
- Usura Ferodi Massima Totale/Maximum total wear of pads =12mm

MODELLO/ MODEL	CODICE/ CODE	A	B	C	D <sub>Max</sub>	E <sub>Max</sub>	Forza Frenante/Braking Force	Peso
PPTP-N660/25.4	19.36.660.04	25.4	244	450	219	341	Ft= 32000N (0bar)	72.7kg
PPTP-N660/ 30	19.36.660.05	30	244	450	219	341	Ft= 32000N (0bar)	72.7kg
PPTP-M660/ 40	19.36.660.06	40	244	450	224	346	Ft= 32000N (0bar)	72.7kg



PPTP-N680/

Pneumatico Negativo / Pneumatically Released

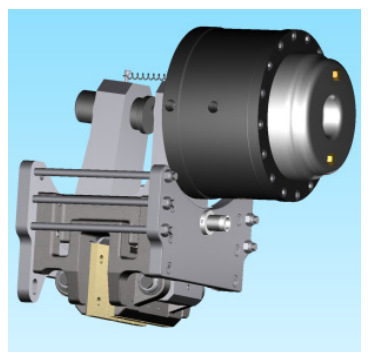
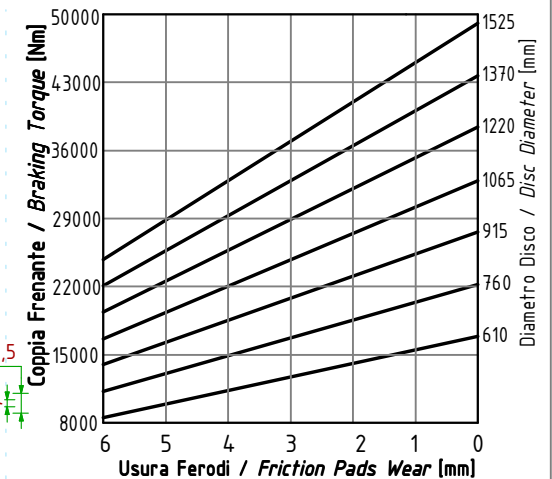
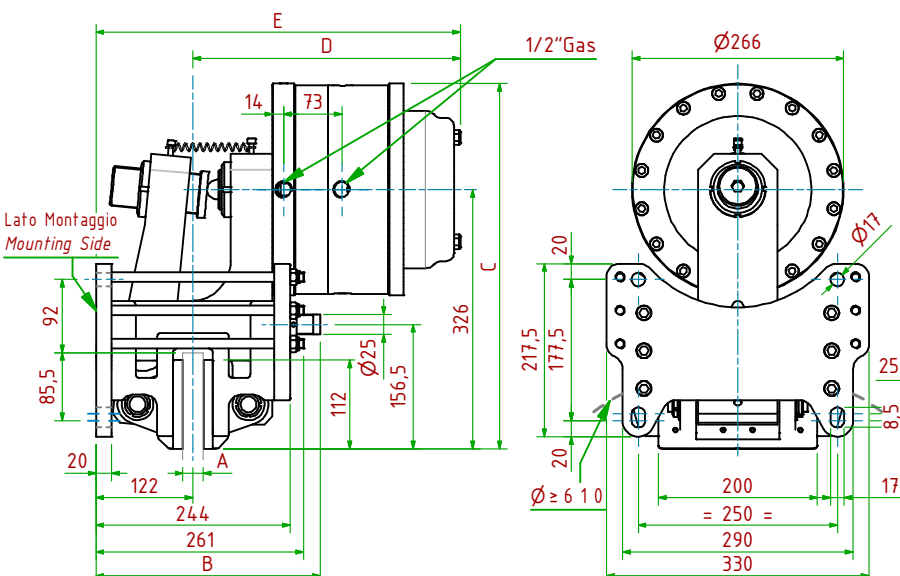


- Pressione di Apertura/Release Pressure: **Pa= 6bar** - Volume Max Cilindro/Max Cylinder Volume: **1000cm<sup>3</sup>**
- Coppia Frenante/Braking Torque: **Md= [Ftx(Φ(m))/2-0.065(m)]**
- Importante:** La Coppia Frenante Iniziale può essere più bassa del 30%-50% **Warning:** Initial Braking Torque can be lower of 30%-50%
- Usura Ferodi Massima Totale/Maximum total wear of pads =12mm

MODELLO / MODEL	CODICE / CODE	A	B	C	D <sub>Max</sub>	E <sub>Max</sub>	Forza Frenante/Braking Force	Peso
PPTP-N680/25.4	19.36.680.04	25.4	282	470	219	341	Ft= 45500N (0bar)	79.1kg
PPTP-N680/ 30	19.36.680.05	30	282	470	219	341	Ft= 45500N (0bar)	79.1kg
PPTP-N680/ 40	19.36.680.06	40	287	470	224	346	Ft= 45500N (0bar)	79.1kg

PPTP-N700/

Pneumatico Negativo / Pneumatically Released



- Pressione di Apertura/Release Pressure: **Pa= 6bar** - Volume Max Cilindro/Max Cylinder Volume: **1662cm<sup>3</sup>**
- Coppia Frenante/Braking Torque: **Md= [Ftx(Φ(m))/2-0.065(m)]**
- Importante:** La Coppia Frenante Iniziale può essere più bassa del 30%-50% **Warning:** Initial Braking Torque can be lower of 30%-50%
- Usura Ferodi Massima Totale/Maximum total wear of pads =12mm

MODELLO / MODEL	CODICE / CODE	A	B	C	D <sub>Max</sub>	E <sub>Max</sub>	Forza Frenante/Braking Force	Peso
PPTP-N700/25.4	19.36.700.04	25.4	282	459	336	458	Ft= 70500N (0bar)	123 kg
PPTP-N700/ 30	19.36.700.05	30	282	459	336	458	Ft= 70500N (0bar)	123 kg
PPTP-N700/ 40	19.36.700.06	40	287	459	341	463	Ft= 70500N (0bar)	123 kg